

WAAS CH 82704 W35A	APP CRS 348°	Rwy Ldg 5010 TDZE 951 Apt Elev 951
--	------------------------	---

RNAV (GPS) RWY 35

JACKSON COUNTY (JCA)

RNP APCH-GPS.

⚠ For uncompensated Baro-VNAV systems, LNAV/VNAV NA below -16°C or above 54°C.
⚠ Circling NA for Cat D west of Rwy 17-35. Baro-VNAV and VDP NA when using Winder altimeter setting. Rwy 35 helicopter visibility reduction below ¼ SM NA. When local altimeter setting not received, use Winder altimeter setting; increase LPV DA to 1232 feet and visibility all Cats ½ SM; increase LNAV/VNAV DA to 1241 feet and visibility all Cats ½ SM; increase all MDAs 40 feet and LNAV visibility Cats C/D ½ SM.

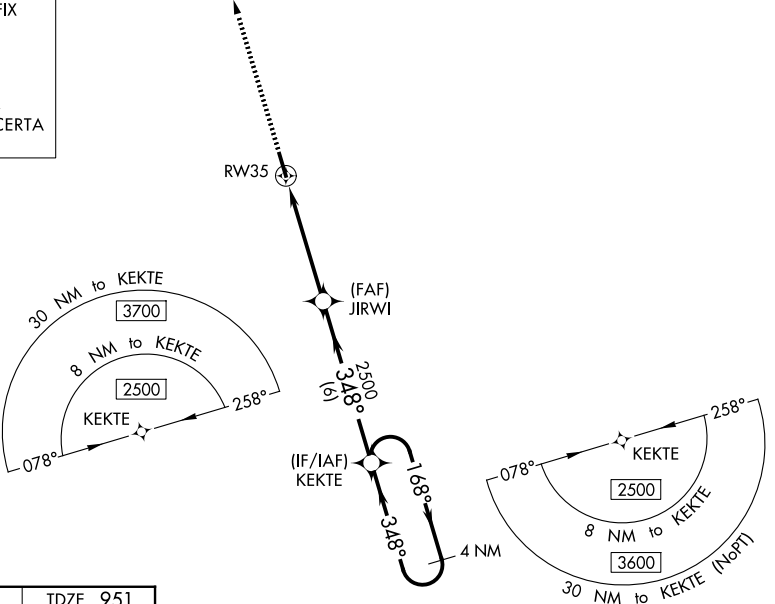
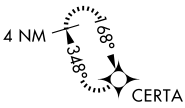
MISSED APPROACH:
Climb to 3700 direct CERTA and hold.

AWOS-3PT
118.125

ATLANTA APP CON*
132.475 291.1

UNICOM
122.975 (CTAF) ①

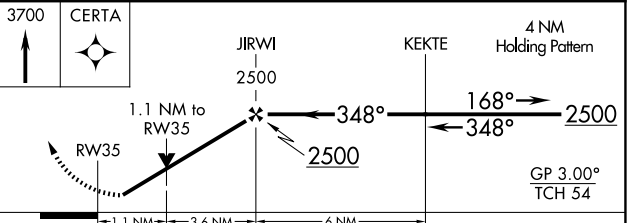
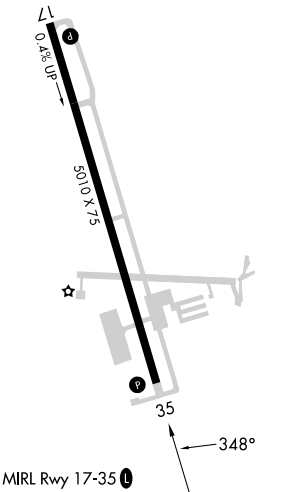
MISSED APCH FIX



SE-4, 14 MAY 2026 to 11 JUN 2026

SE-4, 14 MAY 2026 to 11 JUN 2026

ELEV 951 TDZE 951



CATEGORY	A	B	C	D
LPV DA		1201-7/8	250 (300-7/8)	
LNAV/VNAV DA		1210-7/8	259 (300-7/8)	
LNAV MDA	1340-1	389 (400-1)	1340-1 1/8	389 (400-1 1/8)
CIRCLING	1440-1	489 (500-1)	1580-1 3/4 629 (700-1 3/4)	1580-2 629 (700-2)