

APP CRS	Rwy Ldg	3204
246°	TDZE	2098
	Apt Elev	2099

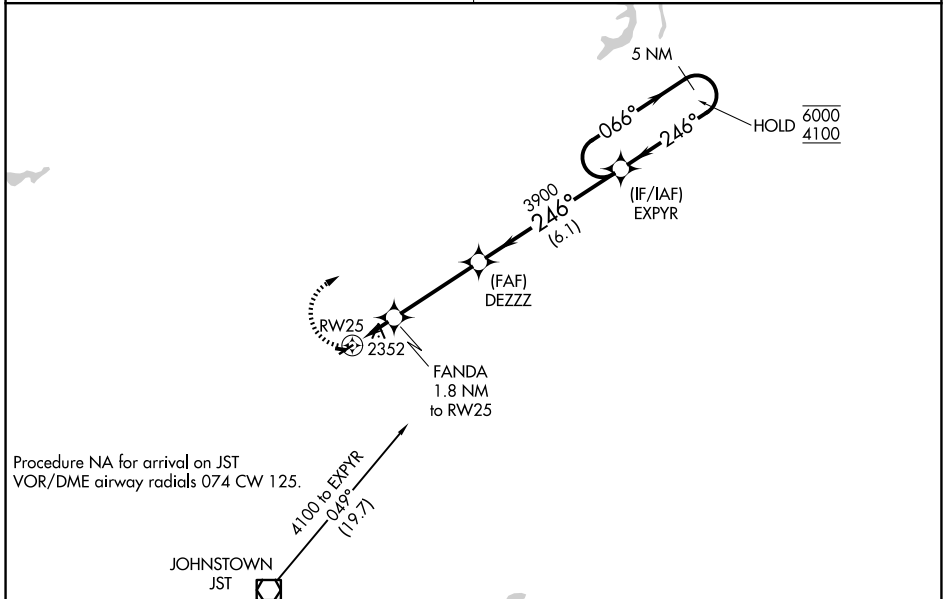
RNAV (GPS) RWY 25

EBENSBURG (9G8)

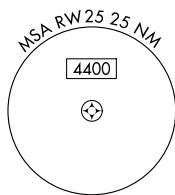
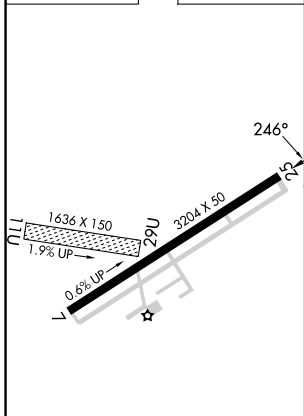
RNP APCH - GPS.	Procedure NA at night. Rwy 25 helicopter visibility reduction below 1 SM NA. Obtain local altimeter setting on CTAF; when not received, use Johnstown altimeter setting and increase all MDA 60 feet and visibility Cat C ¼ SM.	MISSED APPROACH: Climbing right turn to 4100 direct EXPYR and hold.
Procedure NA Obtain local altimeter setting on CTAF; when not received, use Johnstown altimeter setting and increase all MDA 60 feet and visibility Cat C ¼ SM.		

JOHNSTOWN APP CON ★
121.2 299.2

UNICOM
122.8 (CTAF)



ELEV	2099	TDZE	2098
------	------	------	------



4100	EXPYR	Visual Segment - Obstacles.	5 NM Holding Pattern
		DEZZZ 3900 RW25 2720 FANDA 1.8 NM to RW25	EXPYR 4100 066° → 6000 ← 246° 4100
1.8 NM 3.6 NM 6.1 NM			
CATEGORY	A	B	C
RNAV MDA	2620-1	522 (600-1)	2620-1½ 522 (600-1½)
			NA

NE-4, 14 MAY 2026 to 11 JUN 2026

NE-4, 14 MAY 2026 to 11 JUN 2026