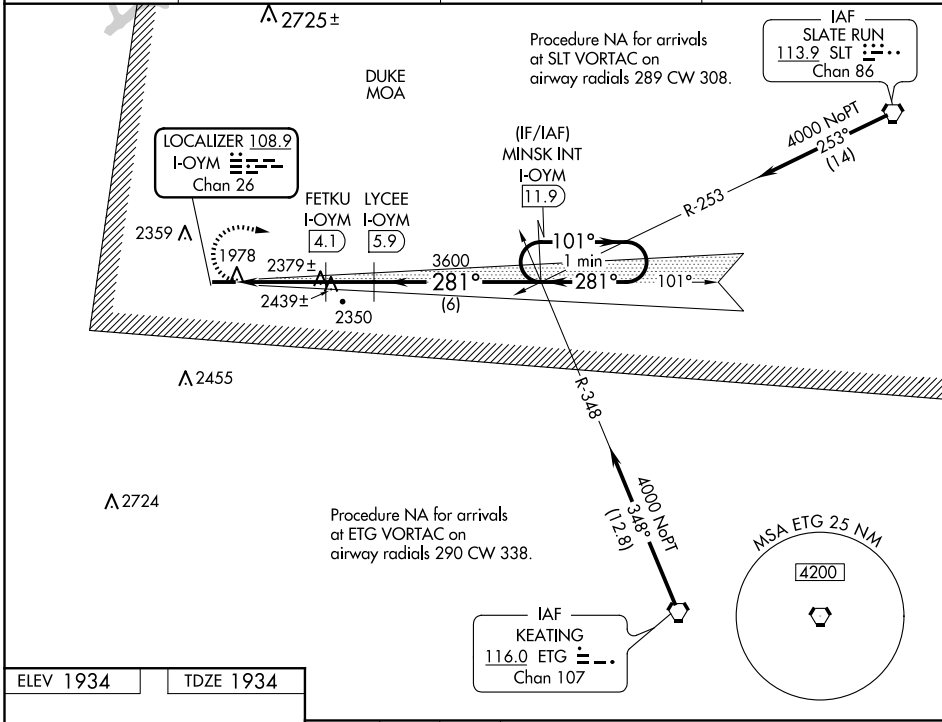


LOC/DME I-OYM <b>108.9</b> Chan 26	APP CRS <b>281°</b>	Rwy Idg TDZE Apt Elev <b>4300</b> <b>1934</b> <b>1934</b>
--	------------------------	--

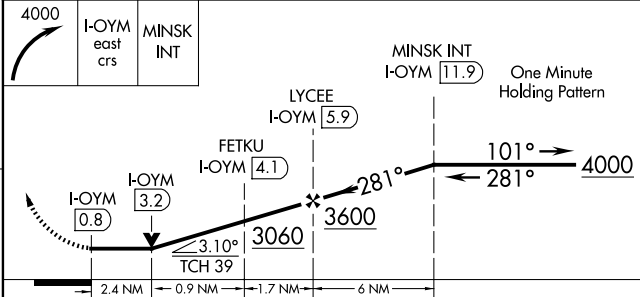
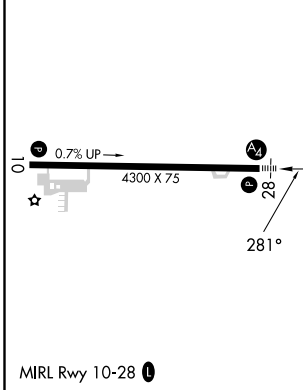
**LOC RWY 28**  
ST MARYS MUNI (OYM)

DME required.	<p>Procedure NA for arrivals at SLT VORTAC on airway radials 289 CW 308.</p> <p>Procedure NA for arrivals at ETG VORTAC on airway radials 290 CW 338.</p>	<p>MALS</p> <p>4.4</p>	<p>MISSED APPROACH: Climbing right turn to 4000 on I-OYM east course to MINSK INT/ 11.9 DME and hold.</p>
<p>▼ Inop table does not apply to Cat A. Rwy 28 helicopter visibility reduction below 3/4 SM NA. VDP NA when using Bradford altimeter setting. When local altimeter setting not received, use Bradford altimeter setting and increase all MDA 240 feet and S-28 Cat B visibility 1/4 SM, Cat C/D 1/2 SM and Circling Cat A 1/4 SM, Cat B 1/2 SM, Cat C 3/4 SM. ⊠ -36°C For inop ALS, increase S-28 Cat C/D visibility to 2 1/2 SM. For inop ALS when using Bradford altimeter setting, increase S-28 Cat C/D visibility to 3 SM.</p>			

AWOS-3P <b>118.05</b>	CLEVELAND CENTER <b>126.725 291.65</b>	ALTOONA CLNC DEL <b>122.4</b>	UNICOM <b>122.7 (CTAF)</b>
--------------------------	---	----------------------------------	-------------------------------



ELEV 1934	TDZE 1934
-----------	-----------



CATEGORY	A	B	C	D
S-28	2740-1	806 (900-1)	2740-2	806 (900-2)
CIRCLING	2740-1 806 (900-1)	2740-1 1/4 806 (900-1 1/4)	2740-2 1/2 806 (900-2 1/2)	2840-2 3/4 906 (1000-2 3/4)

NE-4, 14 MAY 2026 to 11 JUN 2026

NE-4, 14 MAY 2026 to 11 JUN 2026