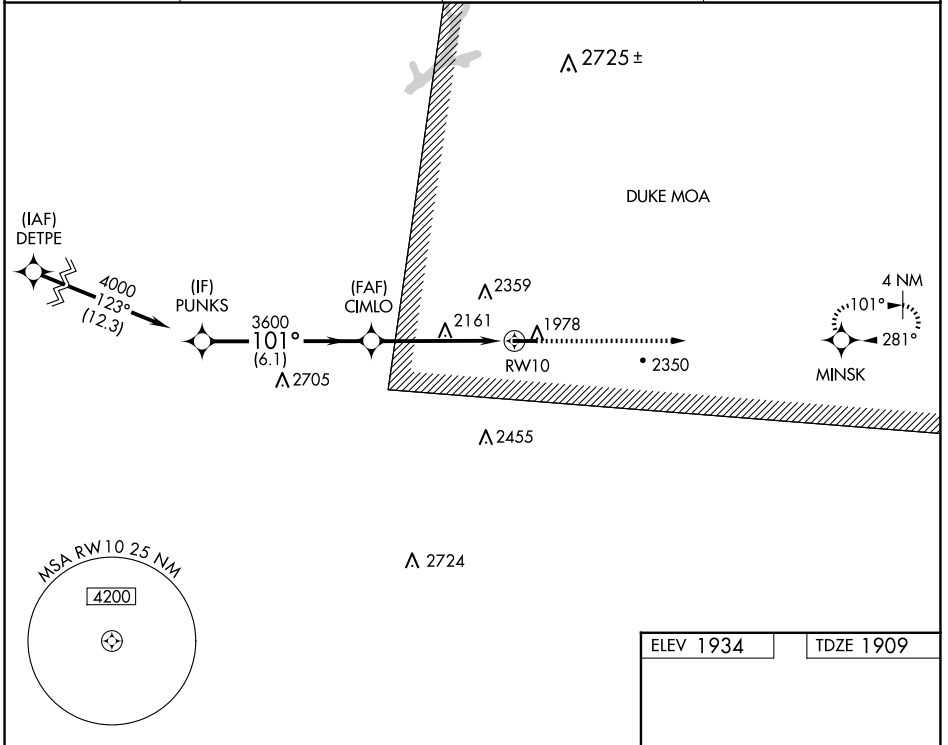


APP CRS	Rwy Idg	<b>4300</b>
<b>101°</b>	TDZE	<b>1909</b>
	Apt Elev	<b>1934</b>

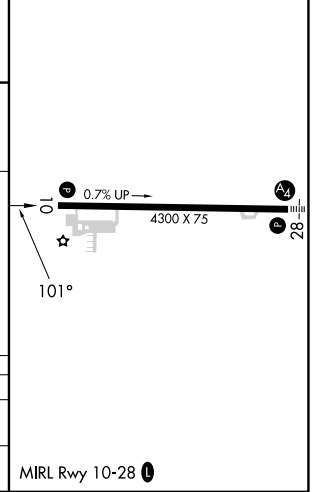
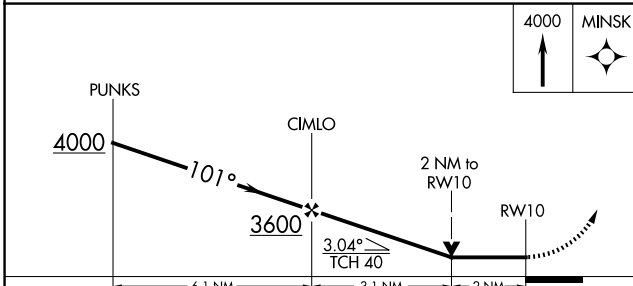
# RNAV (GPS) RWY 10

ST MARYS MUNI (OYM)

RNP APCH - GPS.		MISSED APPROACH: Climb to 4000 direct MINSK and hold.	
<p>▼ Rwy 10 helicopter visibility reduction below ¾ SM NA. VDP NA when using Bradford altimeter setting. When local altimeter setting not received, use Bradford altimeter setting and increase all MDA 240 feet, and LNAV visibility Cat A/B ¼ SM, visibility Cat C/D ½ SM, and Circling visibility Cat A/B ½ SM, visibility Cat C ¾ SM.</p> <p>⊗ -36°C</p>			
AWOS-3P	CLEVELAND CENTER	ALTOONA CLNC DEL	UNICOM
<b>118.05</b>	<b>126.725 291.65</b>	<b>122.4</b>	<b>122.7 (CTAF) 0</b>



ELEV 1934	TDZE 1909
-----------	-----------



CATEGORY	A	B	C	D
LNAV MDA	2580-1	671 (700-1)	2580-1 7/8	671 (700-1 7/8)
CIRCLING	2620-1 686 (700-1)	2660-1 726 (800-1)	2700-2 1/4 766 (800-2 1/4)	2840-3 906 (1000-3)

NE-4, 14 MAY 2026 to 11 JUN 2026

NE-4, 14 MAY 2026 to 11 JUN 2026