

VORTAC RMG 115.4 Chan 101	APP CRS 187°	Rwy Idg TDZE Apt Elev N/A N/A 974
--	------------------------	---

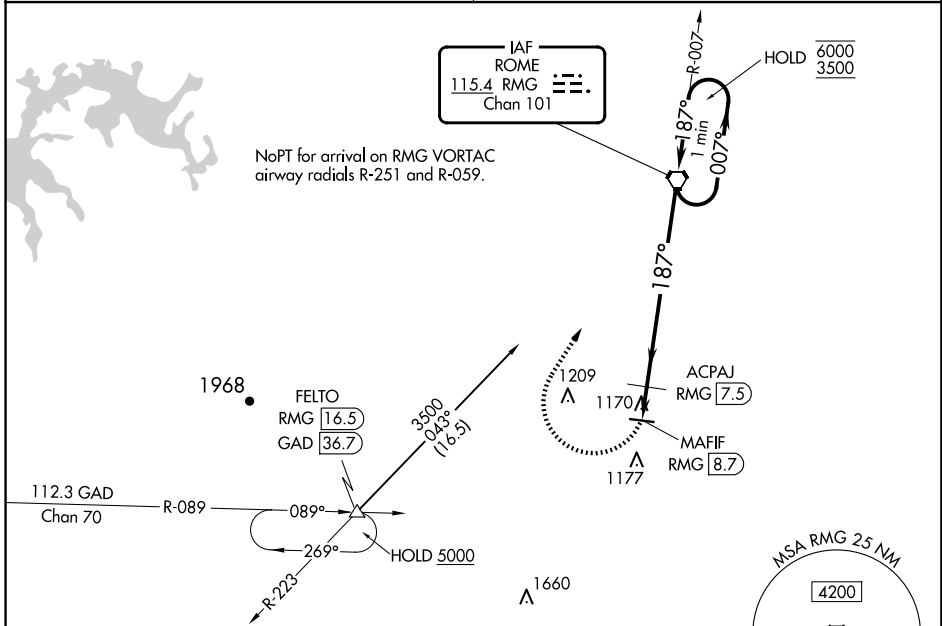
VOR-A

POLK COUNTY/CORNELIUS MOORE FLD (4A4)

∇ Obtain local altimeter setting on CTAF; when not received, use Cartersville altimeter setting and increase all MDAs 80 feet, and visibility Cat C/D ¼ SM, ACPAJ fix minimums visibility Cat C/D ¼ SM.

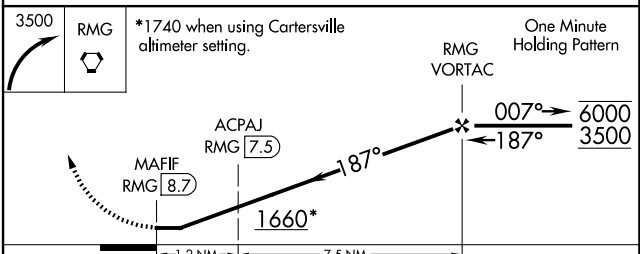
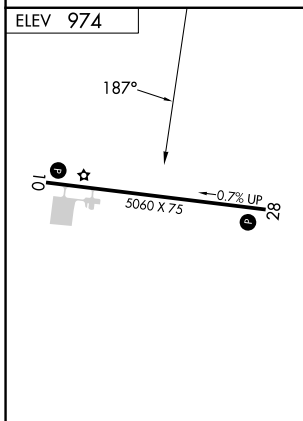
Δ NA MISSED APPROACH: Climbing right turn to 3500 direct RMG VORTAC and hold, continue climb in hold to 3500.

ATLANTA CENTER 124.5 270.325	UNICOM 122.8 (CTAF)
--	-------------------------------



NoPT for arrival on RMG VORTAC airway radials R-251 and R-059.

Procedure NA on V235 westbound without holding at FELTO. ATC clearance required.



CATEGORY	A	B	C	D
CIRCLING	1660-1	686 (700-1)	1660-2 686 (700-2)	1660-2½ 686 (700-2½)
ACPAJ FIX MINIMUMS (DME REQUIRED)				
CIRCLING	1520-1	546 (600-1)	1520-1½ 546 (600-1½)	1580-2 606 (700-2)

MIRL Rwy 10-28

FAF to MAP 8.7 NM					
Knots	60	90	120	150	180
Min:Sec	8:42	5:48	4:21	3:29	2:54

VOR-A

SE-4, 14 MAY 2026 to 11 JUN 2026

SE-4, 14 MAY 2026 to 11 JUN 2026