

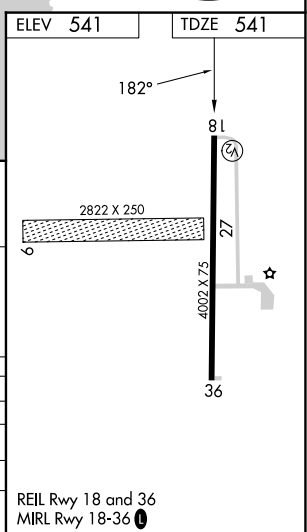
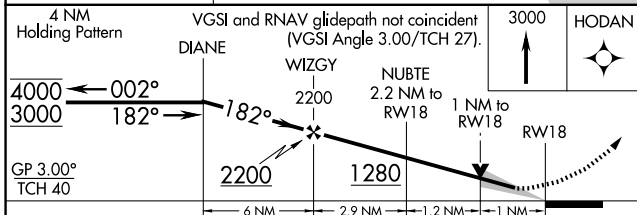
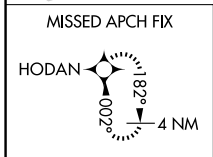
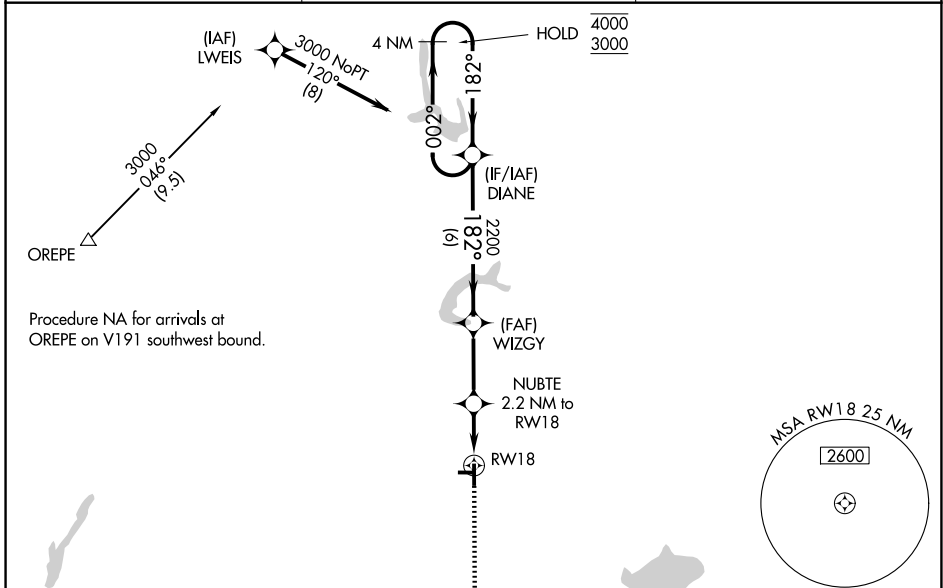
WAAS CH 69638 W18A	APP CRS 182°	Rwy Ldg 4002 TDZE 541 Apt Elev 541
---------------------------------	------------------------	---

RNAV (GPS) RWY 18

GREENVILLE (GR.E)

RNP APCH - GPS.		MISSED APPROACH: Climb to 3000 direct HODAN and hold, continue climb-in-hold to 3000.
<p>NA For uncompensated Baro-VNAV systems, LNAV/VNAV NA below -16°C or above 54°C. Circling NA to Rwy 9 and 27.</p>		

AWOS-2 120.0	KANSAS CITY CENTER 124.3 269.15	UNICOM 123.05 (CTAF) 0
------------------------	---	----------------------------------



CATEGORY	A	B	C	D
LPV DA		745-1	204 (300-1)	
LNAV/VNAV DA		900-1	359 (400-1)	
LNAV MDA		900-1	359 (400-1)	
CIRCLING	960-1 419 (500-1)	1000-1 459 (500-1)	1160-1¼ 619 (700-1¼)	1240-2¼ 699 (700-2¼)

REIL Rwy 18 and 36
MIRL Rwy 18-36 0

EC-3, 14 MAY 2026 to 11 JUN 2026

EC-3, 14 MAY 2026 to 11 JUN 2026