

# CLTCH THREE DEPARTURE (RNAV)

NE-3, 14 MAY 2026 to 11 JUN 2026

## DEPARTURE ROUTE DESCRIPTION

▼ Climb on heading assigned by ATC, expect RADAR vectors to BUTRZ, then on track 239° to CLTCH, thence....

....on assigned transition, maintain altitude assigned by ATC, expect clearance to filed altitude within ten (10) minutes after departure.

FLASK TRANSITION (CLTCH3.FLASK)  
MAULS TRANSITION (CLTCH3.MAULS)

POTOMAC DEP CON  
118.95 257.2  
ATIS  
128.175  
CLNC DEL  
351.8  
GND CON  
121.9 351.8  
DAVISON TOWER ★  
124.275 (CTAF) 229.4

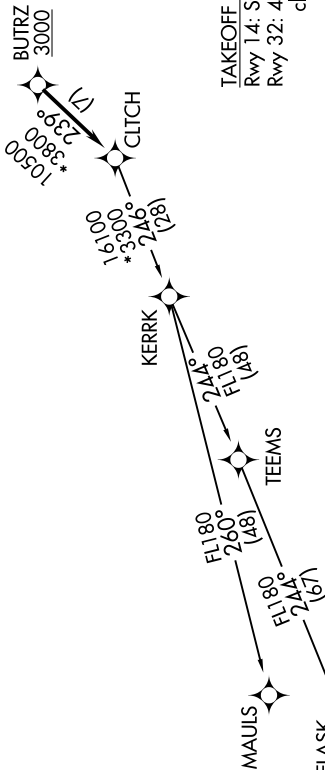
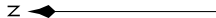
NOTE: RNAV 1.  
NOTE: RADAR required.  
NOTE: DME/DME/IRU or GPS required.  
NOTE: Turbo-jets only.

**TOP ALTITUDE:**  
**3000**

P-56B



P-56A



NOTE: Chart not to scale.

# CLTCH THREE DEPARTURE (RNAV)

(CLTCH3.CLTCH) 31DEC20

NE-3, 14 MAY 2026 to 11 JUN 2026