

FORT BELVOIR, VIRGINIA

# RNAV (GPS) RWY 14

|          |            |      |
|----------|------------|------|
| APCH CRS | Rwy Idg    | 4930 |
| 142°     | TDZE       | 60   |
|          | Arprt Elev | 74   |

(USA)

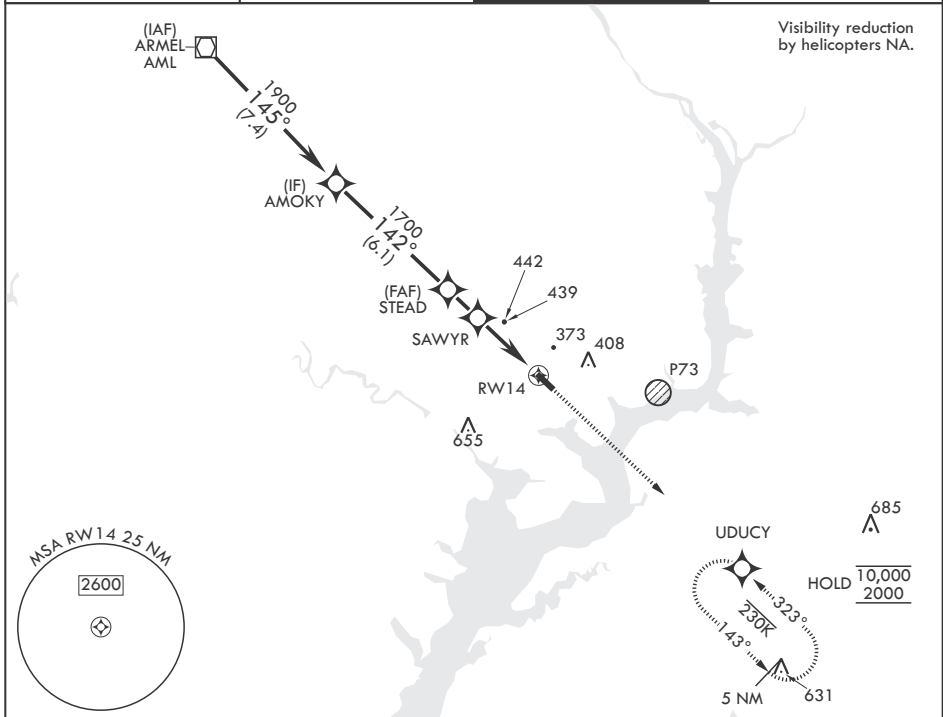
DAVISON AAF (FORT BELVOIR) (KDAV)

RNP APCH-GPS

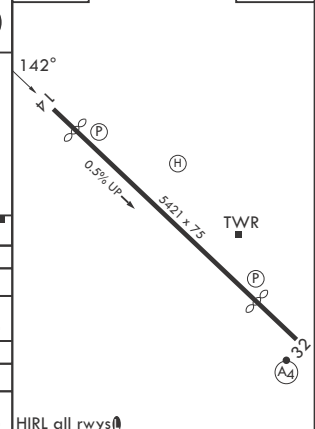
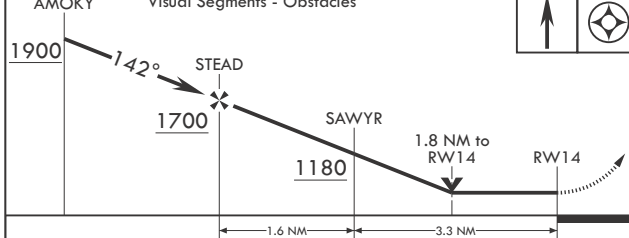
MISSED APPROACH: Climb to 2000  
direct UDCY and hold.

▼ \* If local altimeter setting not received, use Ronald Reagan Washington National altimeter setting. VDP NA with Ronald Reagan Washington Natl altimeter setting.

|                        |  |                                       |                               |
|------------------------|--|---------------------------------------|-------------------------------|
| ATIS<br><b>128.175</b> | POTOMAC APP CON<br><b>118.95 319.1</b> | TOWER*<br><b>124.275 (CTAF) 229.4</b> | GND CON<br><b>121.9 351.8</b> |
|------------------------|--|---------------------------------------|-------------------------------|



AMOKY Visual Segments - Obstacles ELEV 74 TDZE 60



| CATEGORY  | A                    | B                    | C                    | D                      |
|---|----------------------|----------------------|----------------------|------------------------|
| LNAV MDA  | 700/55               | 640 (700-1)          | 700-1¼ 640 (700-1¾)  |                        |
| CIRCLING  | 700-1<br>626 (700-1) | 720-1<br>646 (700-1) | 760-2<br>686 (700-2) | 1000-3<br>926 (1000-3) |
| *RONALD REAGAN WASHINGTON NATIONAL ALTIMETER SETTING MINIMUMS |                      |                      |                      |                        |
| LNAV MDA*   | 740/55               | 680 (700-1)          | 740-1½ 680 (700-1½)  |                        |
| CIRCLING*   | 740-1<br>666 (700-1) | 760-1<br>686 (700-1) | 800-2<br>726 (800-2) | 1043-3<br>966 (1000-3) |

HIRL all rwys

FORT BELVOIR, VIRGINIA  
Amdt 4 16APR26

38°43'N - 77°11'W

DAVISON AAF (FORT BELVOIR) (KDAV)

# RNAV (GPS) RWY 14

NE-3, 14 MAY 2026 to 11 JUN 2026

NE-3, 14 MAY 2026 to 11 JUN 2026