

FORT BELVOIR, VIRGINIA

RNAV (GPS) RWY 32

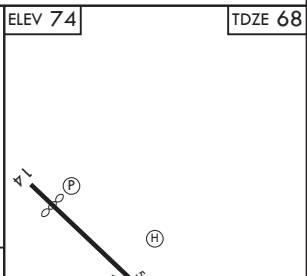
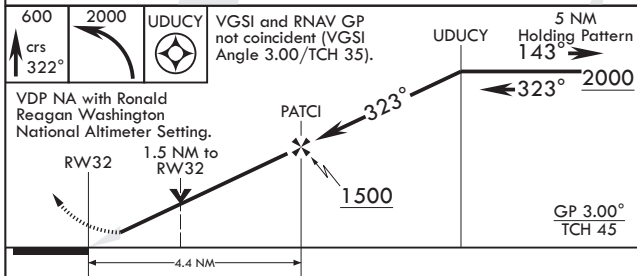
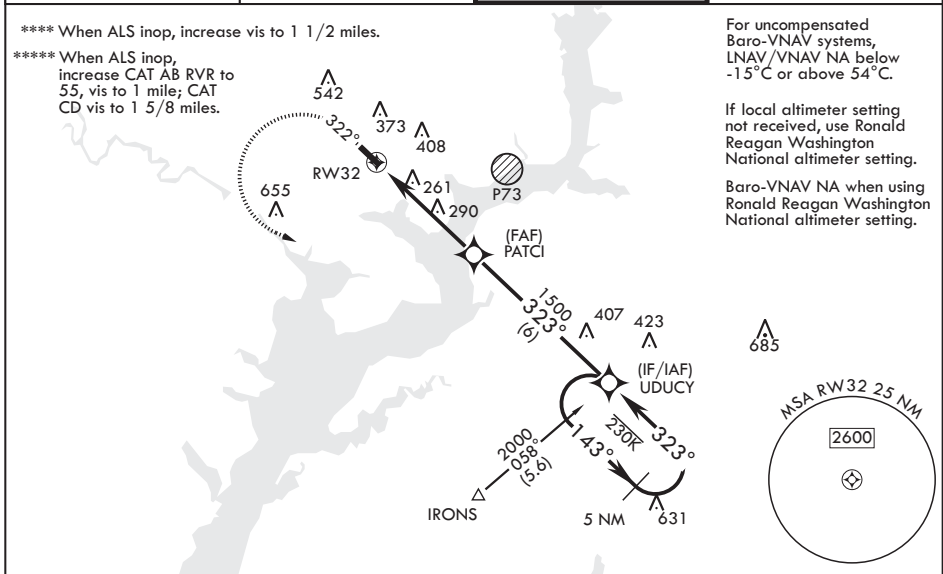
WAAS CH 91281 W32A	APCH CRS 323°	Rwy ldg TDZE 68 Arprt Elev 74
---------------------------------	-------------------------	---

(USA)

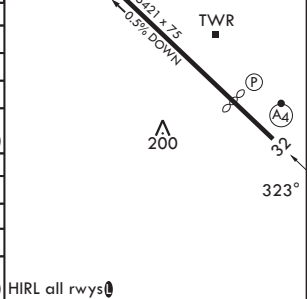
DAVISON AAF (FORT BELVOIR) (KDAV)

RNP APCH - GPS	MALSF A4	MISSED APPROACH: Climb to 600 then climbing left turn to 2000 direct UDU CY and hold.
<p>* When ALS inop, increase RVR to 45, vis to 7/8 mile. ** When ALS inop, increase vis to 1 3/8 miles. *** When ALS inop, increase CAT AB RVR to 55, vis to 1 mile; CAT CD vis to 1 3/8 miles.</p>		

ATIS 128.175	POTOMAC APP CON 118.95 319.1	TOWER* 124.275 (CTAF) 0 229.4	GND CON 121.9 351.8
------------------------	--	--	-------------------------------



CATEGORY	A	B	C	D
LPV DA*	337/40	269	(300-¾)	
LNAV/VNAV DA**	556/60	488	(500-1¼)	
LNAV MDA***	580/40 512 (600-¾)	580-1¼ 512 (600-1¼)		
CIRCLING	680-1 606 (700-1)	720-1 646 (700-1)	760-2 686 (700-2)	1000-3 926 (1000-3)
RONALD REAGAN WASHINGTON NATIONAL ALTIMETER MINIMUMS				
LPV DA	370/40	302	(300-¾)	
LNAV/VNAV DA****	589-1¼	521	(600-1¼)	
LNAV MDA*****	620/40 552 (600-¾)	620-1¼ 552 (600-1¼)		
CIRCLING	720-1 646 (700-1)	760-1 686 (700-1)	800-2 726 (800-2)	1040-3 966 (1000-3)



FORT BELVOIR, VIRGINIA
Amdt 5 16APR26

38°43'N - 77°11'W

DAVISON AAF (FORT BELVOIR) (KDAV)

RNAV (GPS) RWY 32

NE-3, 14 MAY 2026 to 11 JUN 2026

NE-3, 14 MAY 2026 to 11 JUN 2026