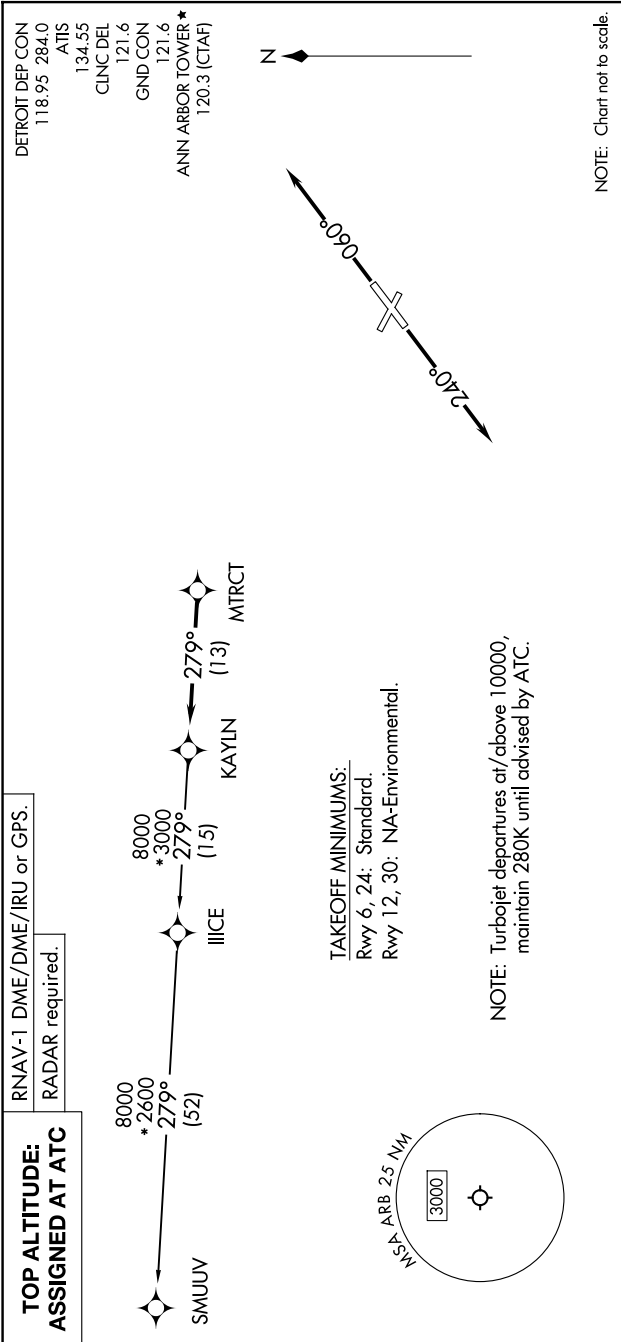


EC-1, 14 MAY 2026 to 11 JUN 2026



DEPARTURE ROUTE DESCRIPTION

TAKEOFF RUNWAY 6: Climb on heading 060° or as assigned by ATC, thence....
TAKEOFF RUNWAY 24: Climb on heading 240° or as assigned by ATC, thence....
for RADAR vectors to MTRCT, then on track 279° to KAYLN, then on (transition). Maintain ATC assigned altitude, expect filed altitude 10 minutes after departure.

SMUUV TRANSITION (KAYLN3.SMUUV):

EC-1, 14 MAY 2026 to 11 JUN 2026