

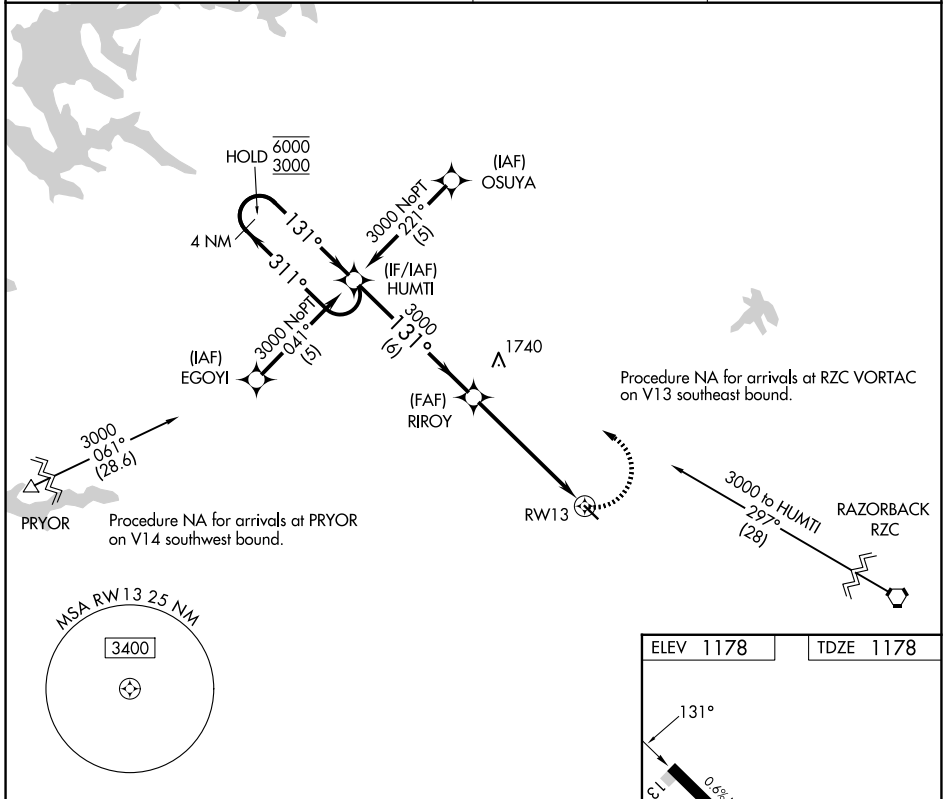
APP CRS 131°	Rwy Ldg TDZE Apt Elev	3863 1178 1178
------------------------	-----------------------------	---

RNAV (GPS) RWY 13

CRYSTAL LAKE (5M5)

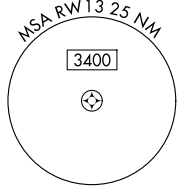
RNP APCH - GPS.		MISSED APPROACH: Climbing left turn to 3000 direct HUMTI and hold.	
<p>Procedure NA at night. Rwy 13 helicopter visibility reduction below 1 SM NA. Use Northwest Arkansas Nil altimeter setting; if not received, use Joplin Rgnl altimeter setting and increase all MDAs 120 feet and LNAV Cat C and Circling Cat B visibility ¼ SM and Circling Cat C visibility ½ SM. Circling NA for Cat C southwest of Rwy 13-31.</p>			

XNA ASOS 119.425	RAZORBACK APP CON * 121.0 244.575	CLNC DEL 126.6	UNICOM 122.8 (CTAF)
----------------------------	---	--------------------------	-------------------------------

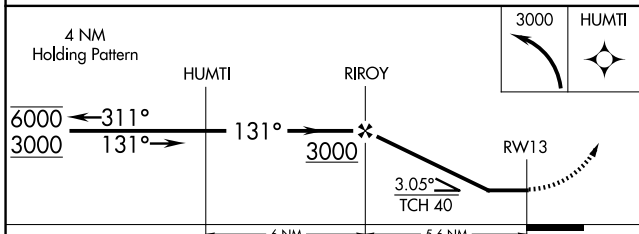
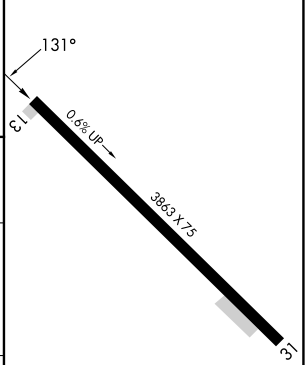


SC-1, 14 MAY 2026 to 11 JUN 2026

SC-1, 14 MAY 2026 to 11 JUN 2026



ELEV 1178	TDZE 1178
-----------	-----------



CATEGORY	A	B	C	D
LNAV MDA	1720-1	542 (600-1)	1720-1 5/8 542 (600-1 5/8)	NA
CIRCLING	1820-1 642 (700-1)	1900-1 722 (800-1)	1940-2 1/4 762 (800-2 1/4)	NA

LURL Rwy 13-31