

WAAS CH 53603 W19A	APP CRS 189°	Rwy Ldg TDZE Apt Elev	5000 803 803
--	------------------------	-----------------------------	---

RNAV (GPS) RWY 19

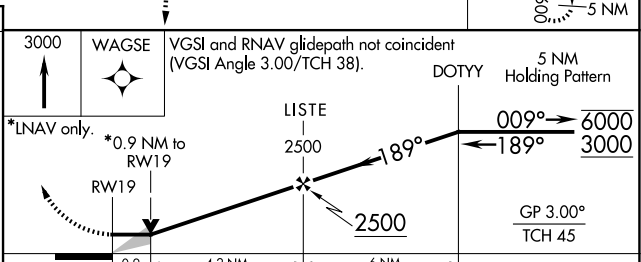
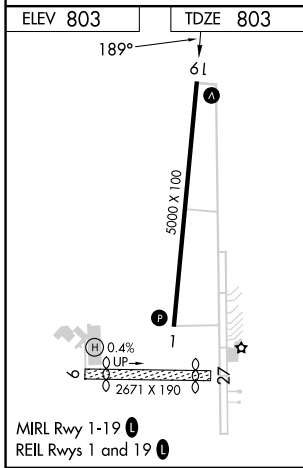
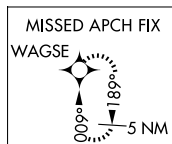
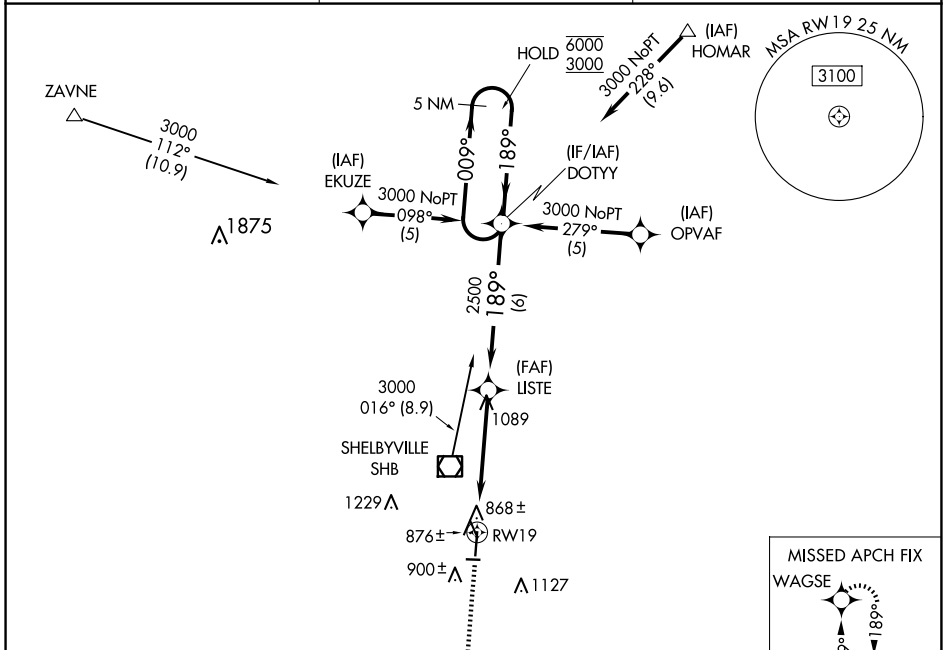
SHELBYVILLE MUNI (G/E/Z)

RNP APCH.

⚠ Circling Rwy 9, 27 NA at night. Baro-VNAV NA when using Indianapolis Intl altimeter setting. For uncompensated Baro-VNAV systems, LNAV/VNAV NA below -16°C or above 54°C. VDP NA when using Indianapolis Intl altimeter setting. When local altimeter setting not received, use Indianapolis Intl altimeter setting: increase LPV DA to 1152 feet and LNAV/VNAV DA to 1199 feet; increase all MDA 60 feet and LNAV Cat C/D visibility 1/8 SM and Circling Cat D visibility 1/4 SM.

MISSED APPROACH:
Climb to 3000 direct WAGSE and hold.

ASOS 121.55	INDIANAPOLIS APP CON 127.15 317.8	UNICOM 122.8 (CTAF) 0
-----------------------	---	---------------------------------



CATEGORY	A	B	C	D
LPV DA		1095-1	292 (300-1)	
LNAV/VNAV DA		1142-1¼	339 (400-1¼)	
LNAV MDA		1140-1	337 (400-1)	
CIRCLING	1240-1 437 (500-1)	1480-1 677 (700-1)	1480-2 677 (700-2)	1540-2¼ 737 (800-2¼)

EC-2, 14 MAY 2026 to 11 JUN 2026

EC-2, 14 MAY 2026 to 11 JUN 2026