

WAAS CH 90203 W13A	APP CRS 130°	Rwy Ldg TDZE Apt Elev 4408 2032 2034
--	------------------------	--

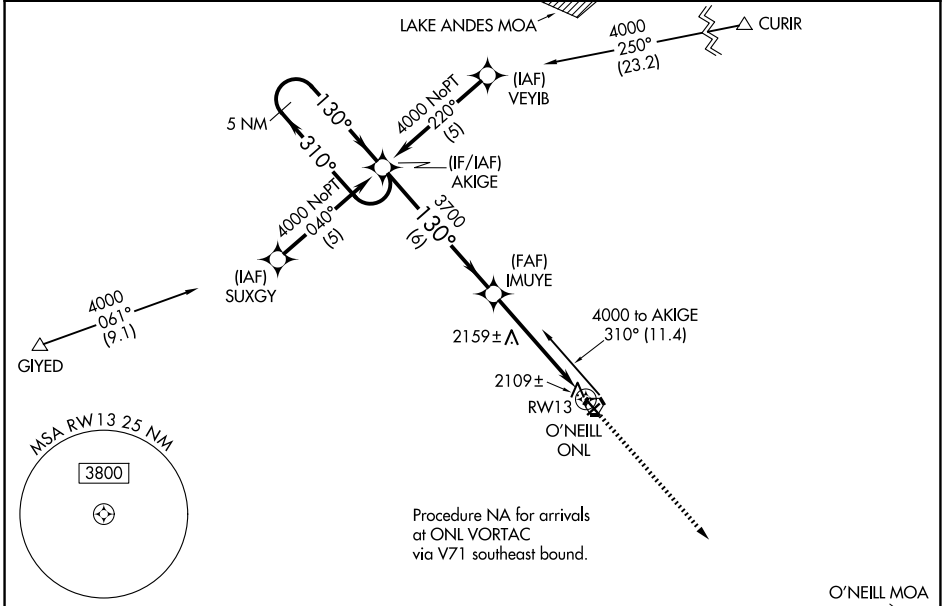
RNAV (GPS) RWY 13

THE O'NEILL MUNI-JOHN L BAKER FLD (ONL)

⚠ Baro-VNAV NA when using Evelyn Sharp Fld altimeter setting. For uncompensated Baro-VNAV systems, LNAV/VNAV NA below -19°C (-2°F) or above 54°C (130°F). DME/DME RNP-0.3 NA. Helicopter visibility reduction below 3/4 SM NA. When local altimeter setting not received, use Evelyn Sharp Fld altimeter setting and increase LPV DA to 2433 feet, LNAV/VNAV DA to 2505 feet; increase all MDAs 140 feet and visibility Cat C 1/2 SM. VDP NA when using Evelyn Sharp Fld altimeter setting. Night landing: Rwy 4, 22 NA.

⚠ MISSED APPROACH: Climb to 4000 direct AFSIC and hold.

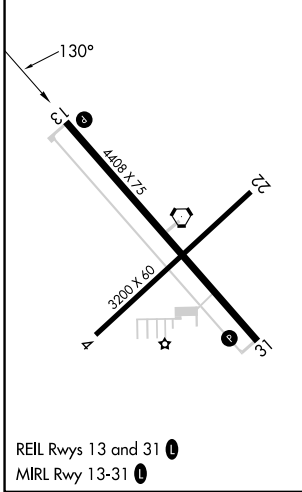
AWOS-3 121.125	MINNEAPOLIS CENTER 128.0 257.95	UNICOM 122.8 (CTAF) 0
--------------------------	---	---------------------------------



NC-2, 14 MAY 2026 to 11 JUN 2026

NC-2, 14 MAY 2026 to 11 JUN 2026

ELEV 2034	TDZE 2032
-----------	-----------



5 NM Holding Pattern AKIGE 4000 ← 310° GP 3.00° TCH 39	IMUYE 3700 6 NM 3.9 NM 1.1 NM	O'NEILL MOA AFSIC 4000 AFSIC		
		*1.1 NM to RW13 *LNAV only. RW13		
CATEGORY	A	B	C	D
LPV DA	2308-1	276 (300-1)	NA	NA
LNAV/VNAV DA	2380-1¼	348 (400-1¼)	NA	NA
LNAV MDA	2420-1	388 (400-1)	NA	NA
CIRCLING	2600-1	566 (600-1)	2680-1¾ 646 (700-1¾)	NA