

WAAS CH <b>77605</b> <b>W23A</b>	APP CRS <b>224°</b>	Rwy Idg TDZE Apt Elev	<b>5100</b> <b>1274</b> <b>1277</b>
--	------------------------	-----------------------------	---

# RNAV (GPS) RWY 23

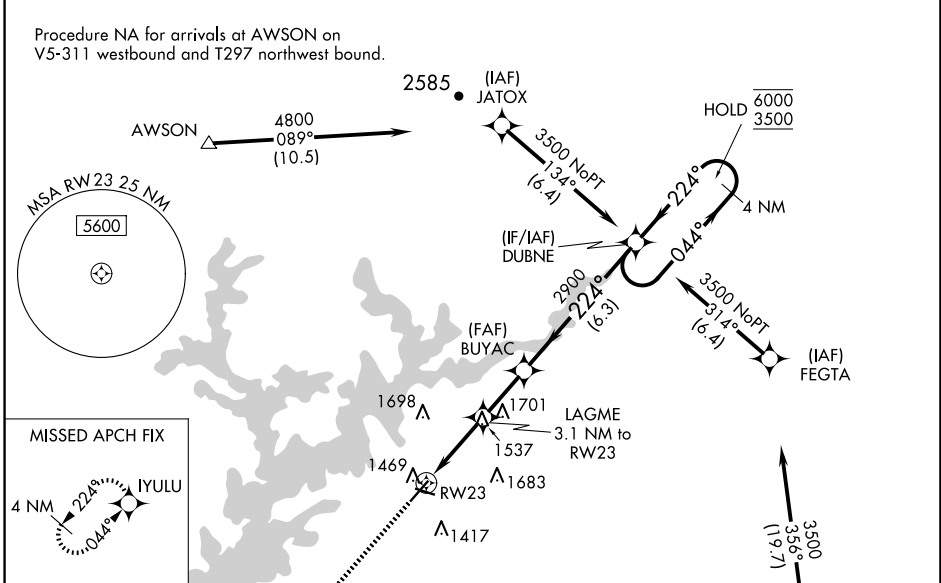
LEE GILMER MEML (GVL)

RNP APCH - GPS.

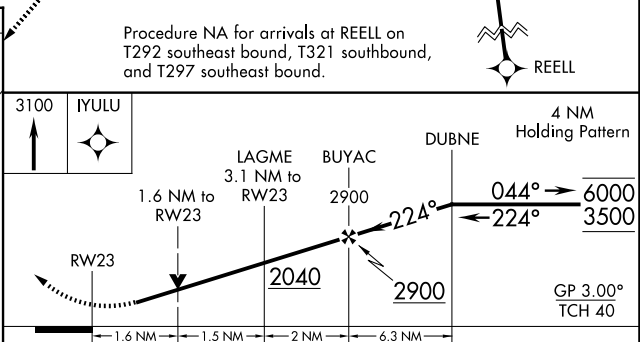
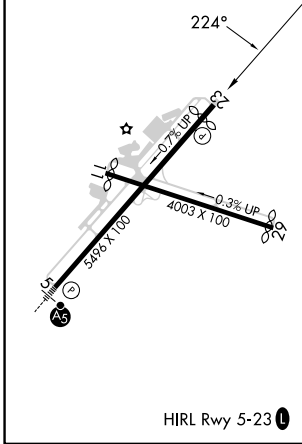
**⚠** Circling Rwy 11, 29 NA at night. Rwy 23 helicopter visibility reduction below 3/4 SM NA. For uncompensated Baro-VNAV systems, LNAV/VNAV NA below -6°C or above 54°C.

MISSED APPROACH:  
Climb to 3100 direct IYULU and hold.

ASOS <b>126.475</b>	ATLANTA APP CON* <b>132.475 291.1</b>	UNICOM <b>123.075 (CTAF) 0</b>
------------------------	--	-----------------------------------



ELEV 1277	<b>D</b>	TDZE 1274
-----------	----------	-----------



CATEGORY	A	B	C	D
LPV DA		1541-7/8	267 (300-7/8)	
LNAV/VNAV DA		1637-1	363 (400-1)	
LNAV MDA	1800-1	526 (600-1)	1800-1/2	526 (600-1/2)
CIRCLING	1800-1 523 (600-1)	2000-1 723 (800-1)	2000-2 723 (800-2)	2020-2 1/2 743 (800-2 1/2)