

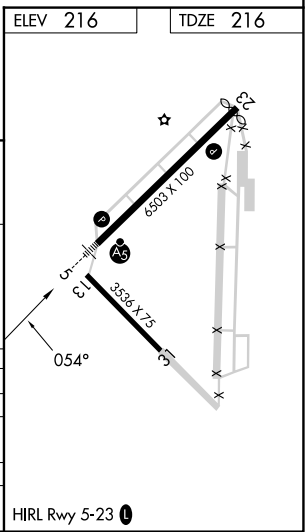
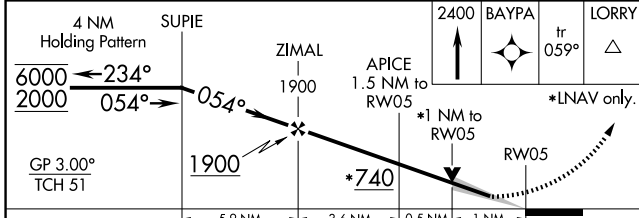
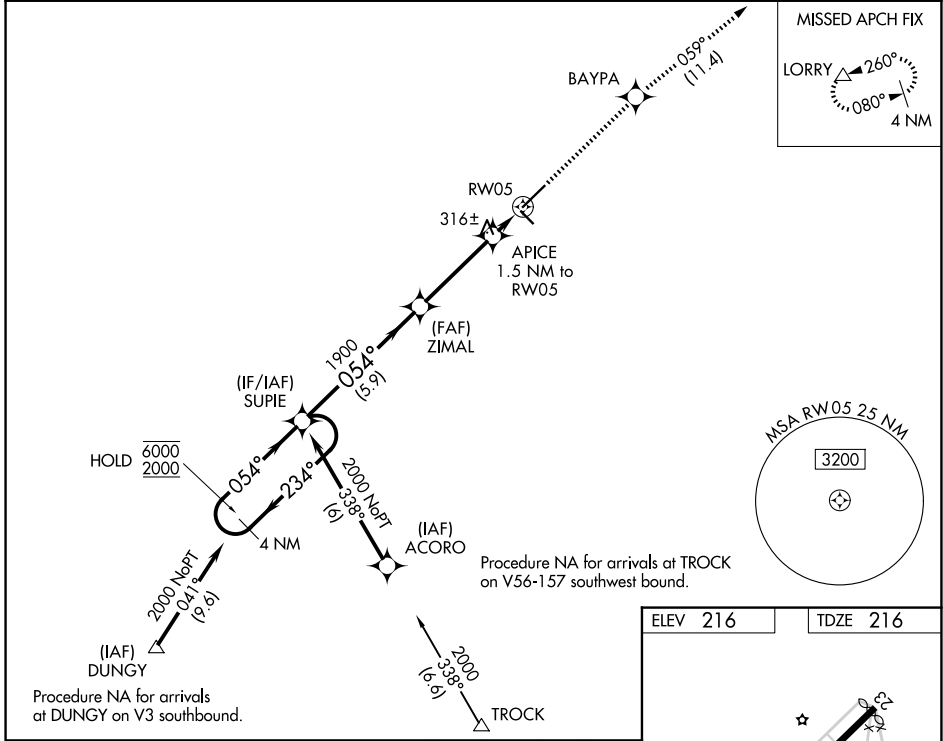
WAAS CH 90423 W05A	APP CRS 054°	Rwy Ldg 6503 TDZE 216 Apt Elev 216
--	------------------------	---

RNAV (GPS) RWY 5

LAURINBURG/MAXTON (MEB)

RNP APCH.	MALSRS	MISSED APPROACH: Climb to 2400 direct BAYPA and on track 059° to LORRY and hold.
<p>⚠ Circling to Rwy 13 and 31 NA at night. For uncompensated Baro-VNAV systems, LNAV/VNAV NA below -15°C or above 42°C. For inop ALS, increase LNAV/VNAV all Cats visibility to 3/4 SM, and LNAV Cat C/D visibility to 1 SM.</p>		

ASOS 134.125	FAYETTEVILLE APP CON 127.8 343.725	UNICOM 122.8 (CTAF) 0
------------------------	--	---------------------------------



GP 3.00° TCH 51	5.9 NM	3.6 NM	0.5 NM	1 NM
CATEGORY	A	B	C	D
LPV DA		416-1/2	200 (200-1/2)	
LNAV/VNAV DA		472-1/2	256 (300-1/2)	
LNAV MDA	580-1/2	364 (400-1/2)	580-5/8	364 (400-5/8)
CIRCLING	740-1	524 (600-1)	780-1/2 564 (600-1/2)	1020-2 1/2 804 (900-2 1/2)

SE-2, 14 MAY 2026 to 11 JUN 2026

SE-2, 14 MAY 2026 to 11 JUN 2026