

WAAS CH 53711 W26A	APP CRS 256°	Rwy Ldg 4997 TDZE 24 Apt Elev 26
--	------------------------	---

RNAV (GPS) RWY 26

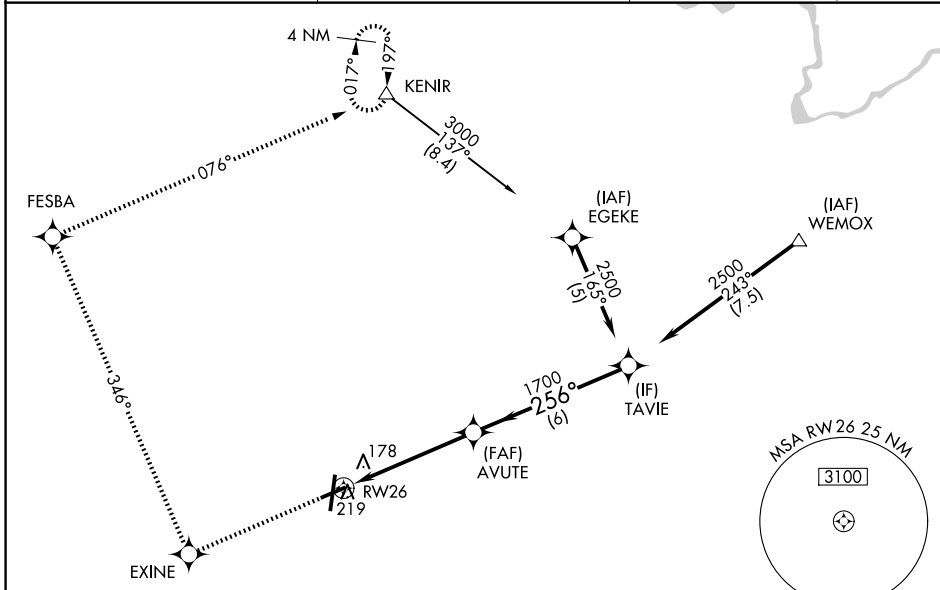
PITT-GREENVILLE (PGV)

RNP APCH - GPS.

▼ Baro-VNAV NA when using Washington altimeter setting. For uncompensated Baro-VNAV systems, LNAV/VNAV NA below -15°C or above 48°C. Rwy 26 helicopter visibility reduction below 3/4 SM NA. When local altimeter setting not received use Washington altimeter setting and increase LPV DA to 376 feet, visibility all Cats 1/8 SM; increase LNAV/VNAV DA to 505, visibility all Cats 1/8 SM; increase all MDAs 60 feet, LNAV visibility Cat C and D and Circling Cat D 1/4 SM.

MISSED APPROACH: Climb to 3000 direct EXINE and via 346° track to FESBA and via 076° track to KENIR and hold.

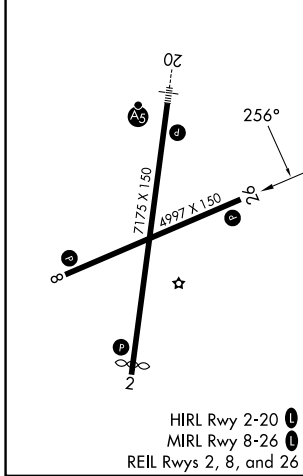
AWOS-3 128.425	WASHINGTON CENTER 123.85 279.65	UNICOM 122.8 (CTAF) 0
--------------------------	---	---------------------------------



SE-2, 14 MAY 2026 to 11 JUN 2026

SE-2, 14 MAY 2026 to 11 JUN 2026

ELEV 26	D	TDZE 24
---------	----------	---------



3000	EXINE	tr 346°	FESBA	tr 076°	KENIR	VGSIs and descent angles not coincident (VGSIs Angle 3.00°/TCH 40).					
						TAVIE	Procedure Turn NA				
						AVUTE	2500	GP 3.00° TCH 45			
								5.1 NM 6 NM			
CATEGORY	A		B		C		D				
LPV DA	335-7/8		311 (400-7/8)								
LNAV/VNAV DA	464-1 1/4		440 (500-1 1/4)								
LNAV MDA	520-1		496 (500-1)		520-1 3/8		496 (500-1 3/8)				
CIRCLING	600-1		620-1		700-2		800-2 1/2				
	574 (600-1)		594 (600-1)		674 (700-2)		774 (800-2 1/2)				