

APP CRS 355°	Rwy Idg 5001
	TDZE 42
	Apt Elev 42

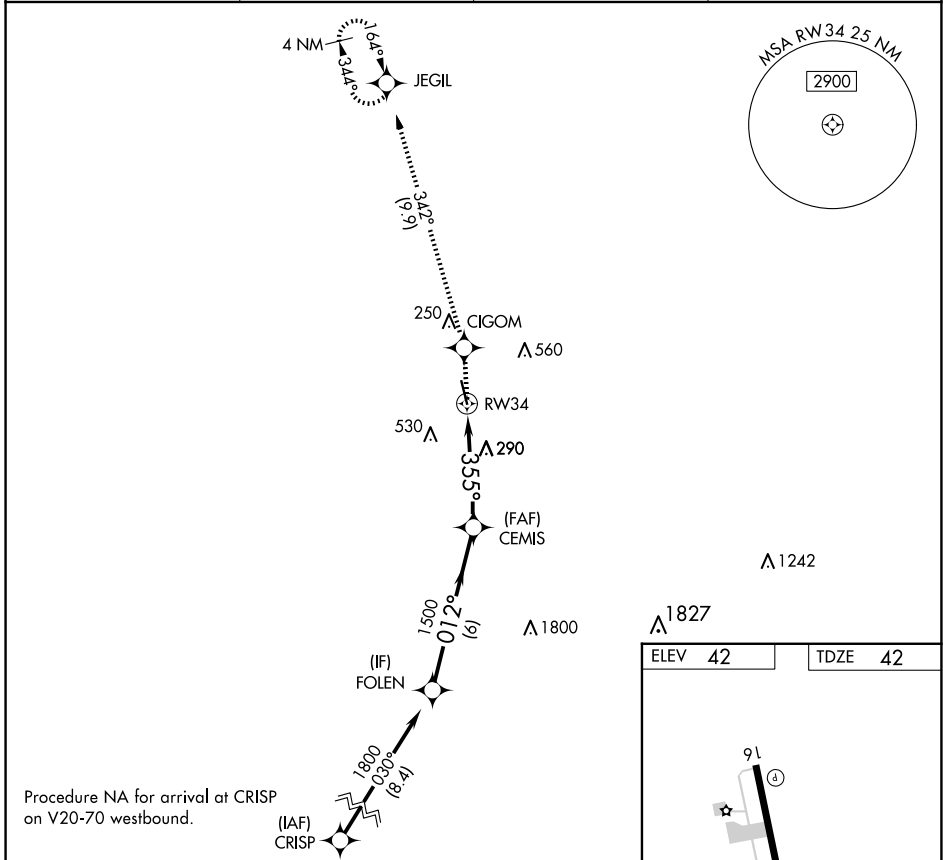
RNAV (GPS) RWY 34

EUNICE (4R7)

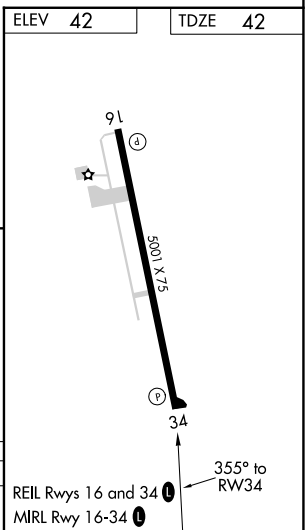
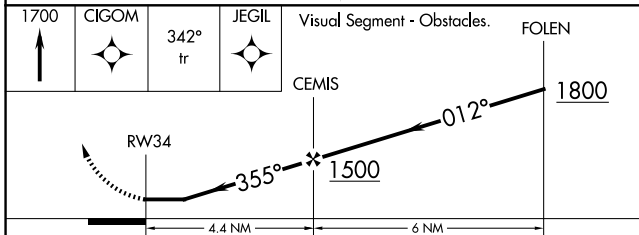
RNP APCH.
 Procedure NA at night. Rwy 34 helicopter visibility reduction below 1 SM NA. Use Lafayette Rgnl/Paul Fournet Fld altimeter setting.

MISSED APPROACH: Climb to 1700 direct CIGOM and on 342° track to JEGIL and hold.

LFT ASOS 134.05	LAFAYETTE APP CON ★ 128.7 268.7	GCO 135.075	UNICOM 122.8 (CTAF) 0
---------------------------	---	-----------------------	---------------------------------



Procedure NA for arrival at CRISP on V20-70 westbound.



CATEGORY	A	B	C	D
LNAV MDA	660-1	618 (700-1)	660-1¾ 618 (700-1¾)	NA

SC-4, 14 MAY 2026 to 11 JUN 2026

SC-4, 14 MAY 2026 to 11 JUN 2026