



| | | |
|---------------------------|------------------------|---|
| LOC I-UCY 109.7 | APP CRS 006° | Rwy Ldg 6503 TDZE 346 Apt Elev 346 |
|---------------------------|------------------------|---|


ILS or LOC RWY 1

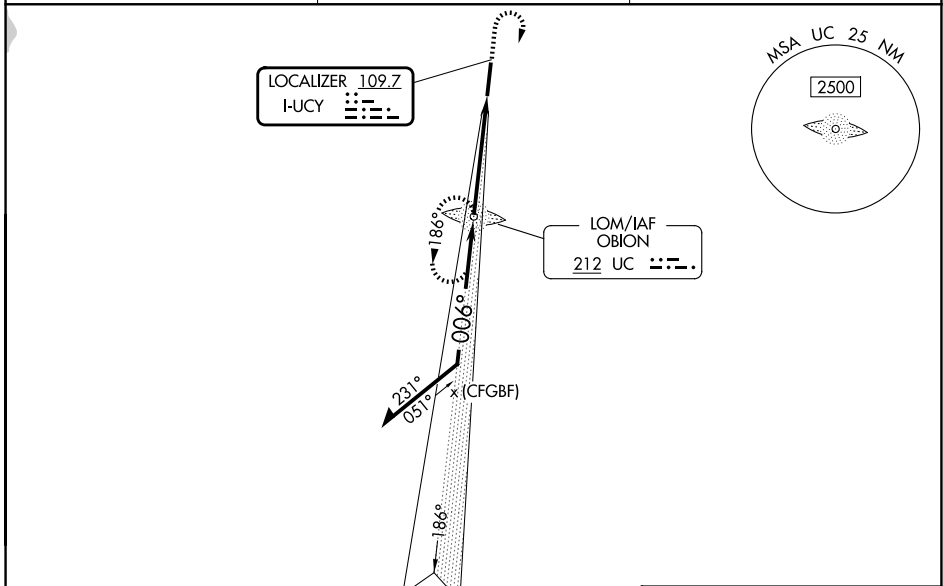
EVERETT-STEWART RGNL (UCY)

NA ADF required. When local altimeter setting not received, use Dyersburg altimeter setting and increase all DA 72 feet and all MDA 80 feet, increase S-LOC 1 Cat C/D visibility to 1 3/4 mile, Circling Cat C visibility to 1 3/4 mile and Circling Cat D visibility to 2 1/2 mile. Inop table does not apply to S-ILS 1. For inop ODALS, increase S-LOC 1 Cat C/D visibility to 1 3/4 mile. For inop ODALS when using Dyersburg altimeter setting, increase S-ILS 1 all Cats visibility to 3/4 mile and S-LOC 1 Cat D visibility to 1 3/4 mile.

ODALS  

MISSED APPROACH: Climb to 1300 then climbing right turn to 2500 direct OBION LOM and hold.

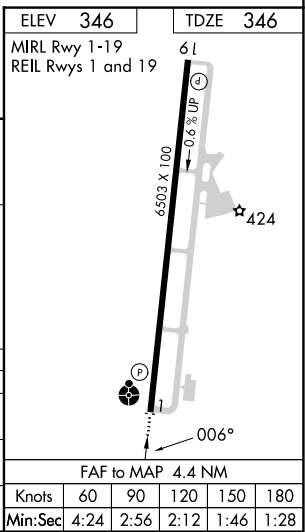
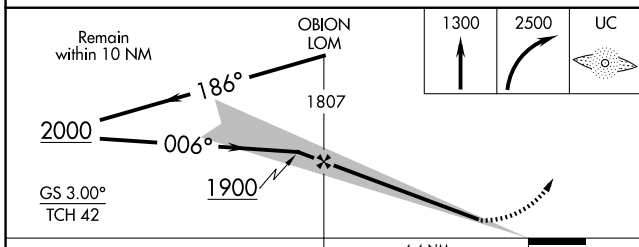
| | | |
|--------------------------|--|---|
| AWOS-3 135,325 | MEMPHIS CENTER 133.65 292.15 | UNICOM 122.7 (CTAF)  |
|--------------------------|--|---|



SE-1, 14 MAY 2026 to 11 JUN 2026

SE-1, 14 MAY 2026 to 11 JUN 2026

ADF and RADAR REQUIRED



| CATEGORY | A | B | C | D |
|----------|---------|---------------|---------------|---|
| S-ILS 1 | | 546-3/4 | 200 (200-3/4) | |
| S-LOC 1 | 820-3/4 | 474 (500-3/4) | 820-1 1/4 | 474 (500-1 1/4) |
| CIRCLING | 820-1 | 474 (500-1) | 820-1 1/2 | 1020-2 1/4 474 (500-1 1/2) 674 (700-2 1/4) |