


|  |                        |                             |   |
|--|------------------------|-----------------------------|---|
| WAAS<br>CH <b>53328</b><br><b>W01A</b> | APP CRS<br><b>006°</b> | Rwy Ldg<br>TDZE<br>Apt Elev | <b>6503</b><br><b>346</b><br><b>346</b> |
|--|------------------------|-----------------------------|---|

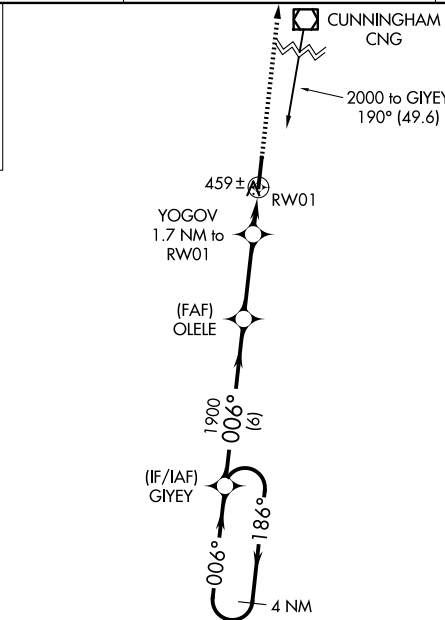
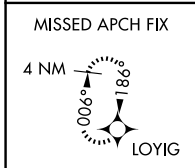
# RNAV (GPS) RWY 1

EVERETT-STEWART RGNL (UCY)

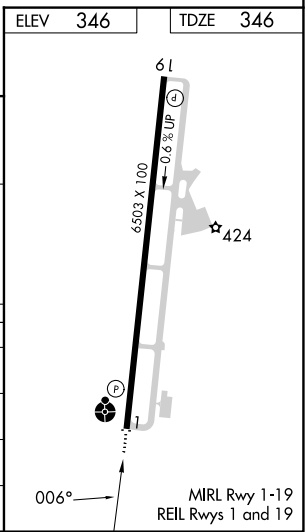
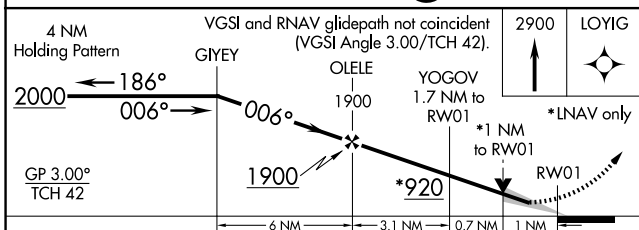
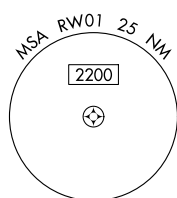
**⚠ NA** For uncompensated Baro-VNAV systems, LNAV/VNAV NA below -15°C (5°F) or above 54°C (130°F). DME/DME RNP-0.3 NA. VDP and Baro-VNAV NA when using Dyersburg altimeter setting. When local altimeter setting not received, use Dyersburg altimeter setting and increase all DA 72 feet and all MDA 80 feet, increase LNAV/VNAV all Cats visibility to 1½ SM, LNAV Cat C/D visibility to 1½ SM, and Circling Cat D visibility to 2½ SM. For inoperative ALS, increase LNAV/VNAV and LNAV all Cats visibility to 1 SM. For inoperative ALS when using Dyersburg altimeter setting, increase LPV all Cats visibility to ¾ SM, LNAV/VNAV all Cats visibility to 1¼ SM, and LNAV Cat D visibility to 1¾ SM. Inoperative table does not apply to LPV all Cats and LNAV Cats C/D.

**ODALS**  
 MISSED APPROACH: Climb to 2900 direct LOYIG and hold.

|                          |  |                                 |
|--------------------------|--|---------------------------------|
| AWOS-3<br><b>135.325</b> | MEMPHIS CENTER<br><b>133.65 292.15</b> | UNICOM<br><b>122.7 (CTAF) 0</b> |
|--------------------------|--|---------------------------------|



Procedure NA for arrival on CNG VOR/DME airway radials 133 CW 240.



| CATEGORY     | A                    | B                    | C                      | D                       |
|--------------|----------------------|----------------------|------------------------|-------------------------|
| LPV DA       |                      | 546-¾                | 200 (200-¾)            |                         |
| LNAV/VNAV DA |                      | 640-⅞                | 294 (300-⅞)            |                         |
| LNAV MDA     | 720-¾                | 374 (400-¾)          | 720-1                  | 374 (400-1)             |
| CIRCLING     | 760-1<br>414 (500-1) | 800-1<br>454 (500-1) | 820-1½<br>474 (500-1½) | 1020-2¼<br>674 (700-2¼) |

SE-1, 14 MAY 2026 to 11 JUN 2026

SE-1, 14 MAY 2026 to 11 JUN 2026