

WAAS CH 69532 W10A	APP CRS 103°	Rwy Ldg TDZE Apt Elev	5006 897 906
--	------------------------	-----------------------------	---

RNAV (GPS) RWY 10

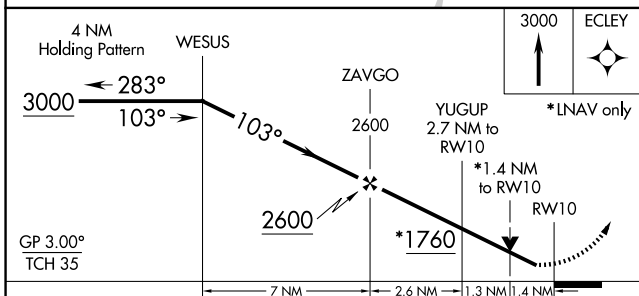
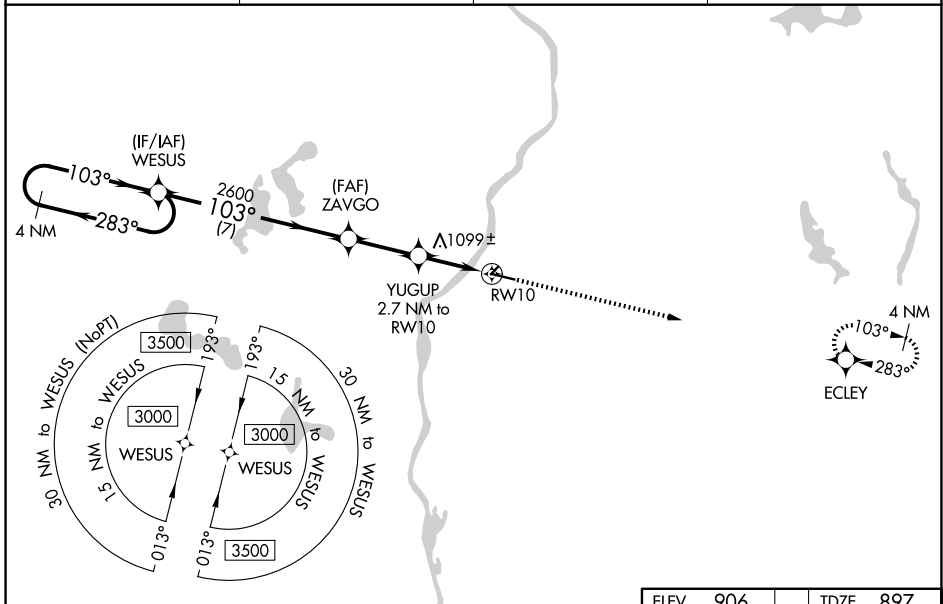
L O SIMENSTAD MUNI (O/E O)

RNP APCH - GPS.

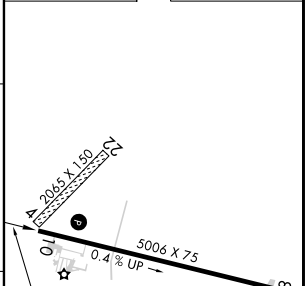
▼ For uncompensated Baro-VNAV systems, LNAV/VNAV NA below -1.6°C or above 54°C. VDP and Baro-VNAV NA when using Anoka County/Blaine (Janes Fld) altimeter setting. When local altimeter setting not received, use Anoka County/Blaine (Janes Fld) altimeter setting; increase LPV DA to 1204 feet and visibility all Cats ½ SM; increase LNAV/VNAV DA to 1247 feet and visibility all Cats ¼ SM; increase all MDAs 60 feet and visibility LNAV Cat C ½ SM and Circling Cat C ¼ SM. Rwy 10 helicopter visibility reduction below ¾ SM NA. Circling NA to Rwy's 4 and 22.

MISSED APPROACH:
Climb to 3000 direct
ECLEY and hold.

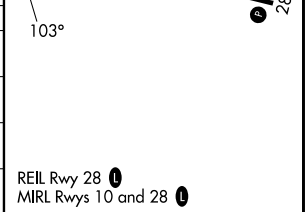
AWOS-3 119.925	MINNEAPOLIS APP CON 121.2 335.65	GCO 121.725	CTAF 122.9
--------------------------	--	-----------------------	----------------------



ELEV	906	TDZE	897
------	-----	------	-----



CATEGORY	A	B	C	D
LPV DA	1147-7/8	250 (300-7/8)		NA
LNAV/VNAV DA	1190-1	293 (300-1)		NA
LNAV MDA	1360-1	463 (500-1)	1360-1 3/8 463 (500-1 3/8)	NA
CIRCLING	1360-1 454 (500-1)	1500-1 594 (600-1)	1520-1 3/4 614 (700-1 3/4)	NA



EC-3, 14 MAY 2026 to 11 JUN 2026

EC-3, 14 MAY 2026 to 11 JUN 2026