

APP CRS 011°	Rwy Idg 3496 TDZE 49 Apt Elev 49
------------------------	---

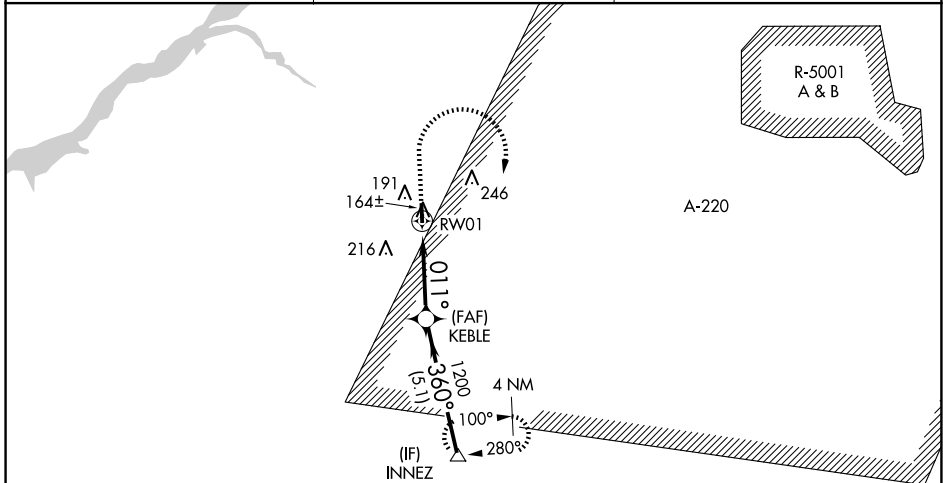
RNAV (GPS) RWY 1

FLYING W (N14)

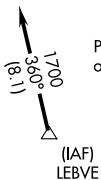
▲ Use Mount Holly altimeter setting; when not received, use Northeast Philadelphia altimeter setting and increase all MDA 40 feet. DME/DME RNP-0.3 NA. Straight-in Rwy 1 NA at night, Circling Rwy 1 NA at night. Rwy 1 helicopter visibility reduction below 1 SM NA.

MISSED APPROACH: Climb to 500 then climbing right turn to 2000 direct INNEZ and hold.

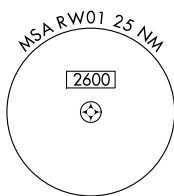
VAY ASOS 119.325	MC GUIRE APP CON 126.475 363.8	UNICOM 122.8 (CTAF)
----------------------------	--	-------------------------------



1049 A

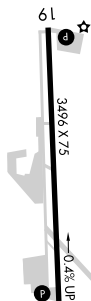


Procedure NA for arrivals on V16 southwest bound.

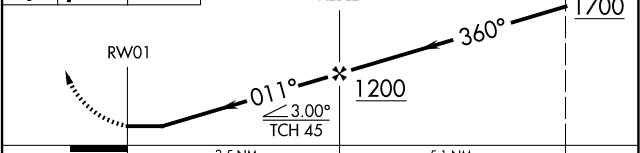


ELEV 49	TDZE 49
---------	---------

MIRL Rwy 1-19
REIL Rwys 1 and 19



500	2000	INNEZ	VGSI and descent angles not coincident (VGSI Angle 3.50/TCH 26).	INNEZ
↑	↷	△		



CATEGORY	A	B	C	D
RNAV MDA	420-1	371 (400-1)	NA	
CIRCLING	520-1	471 (500-1)	NA	

NE-2, 14 MAY 2026 to 11 JUN 2026

NE-2, 14 MAY 2026 to 11 JUN 2026