

WAAS CH 62822 W16A	APP CRS 161°	Rwy Idg 4901 TDZE 1296 Apt Elev 1300
--	------------------------	---

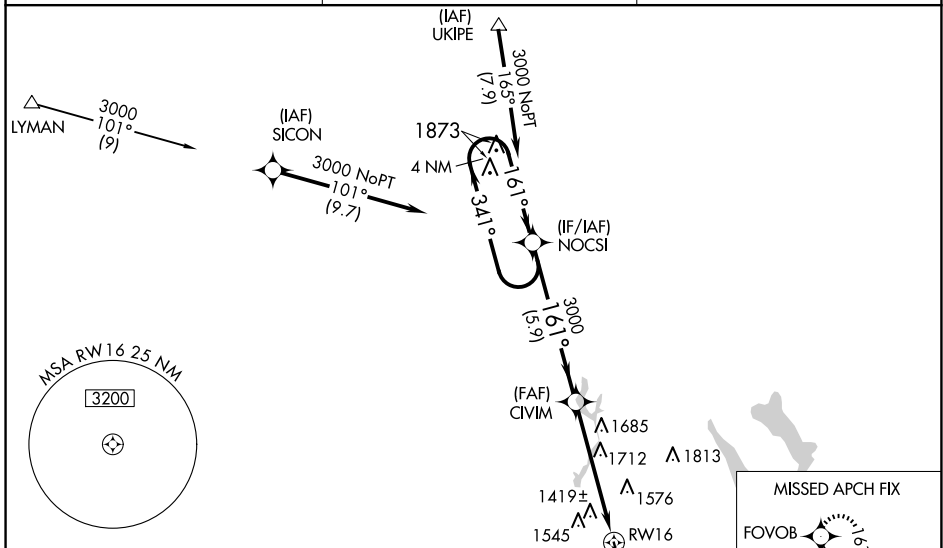
RNAV (GPS) RWY 16

CRESTON MUNI (CSQ)

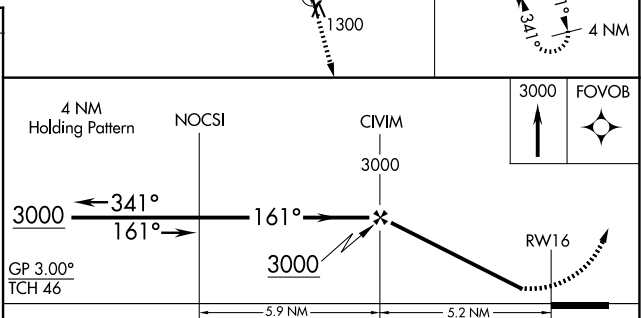
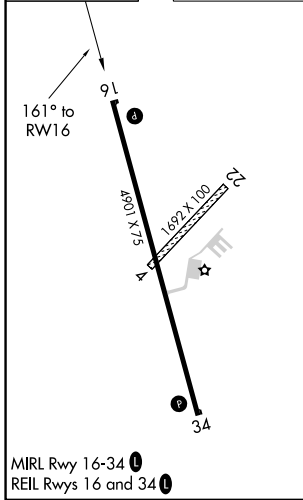
⚠ Baro-VNAV NA when using Des Moines altimeter setting. For uncompensated Baro-VNAV systems, LNAV/VNAV NA below -17°C (2°F) or above 54°C (130°F). DME/DME RNP-0.3 NA. Helicopter visibility reduction below 3/4 SM NA. Circling NA to Rwy 4-22. Circling NA for Cats B and C west of Rwy 16-34. When local altimeter setting not received, use Des Moines altimeter setting and increase all DA 150 feet and all MDA 160 feet; increase LPV all Cats visibility 3/8 mile, LNAV/VNAV all Cats visibility 1/2 mile, LNAV and Circling Cat A/B visibility 1/4 mile, and LNAV and Circling Cat C visibility 1/2 mile.

MISSED APPROACH:
Climb to 3000 direct FOVOB and hold.

AWOS-3 124.75	MINNEAPOLIS CENTER 125.65 306.95	UNICOM 122.8 (CTAF) 0
-------------------------	--	---------------------------------



ELEV 1300	TDZE 1296
------------------	------------------



CATEGORY	A	B	C	D
LPV DA	1546-1		250 (300-1)	NA
LNAV/VNAV DA	1730-1½		434 (500-1½)	NA
LNAV MDA	2020-1	724 (800-1)	2020-2 724 (800-2)	NA
CIRCLING	2020-1	720 (800-1)	2020-2 720 (800-2)	NA

NC-3, 14 MAY 2026 to 11 JUN 2026

NC-3, 14 MAY 2026 to 11 JUN 2026