

WAAS CH <b>82422</b> <b>W34A</b>	APP CRS <b>341°</b>	Rwy Idg TDZE <b>1296</b> Apt Elev <b>1300</b>
--	------------------------	---

# RNAV (GPS) RWY 34

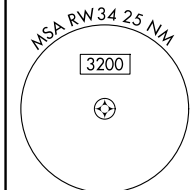
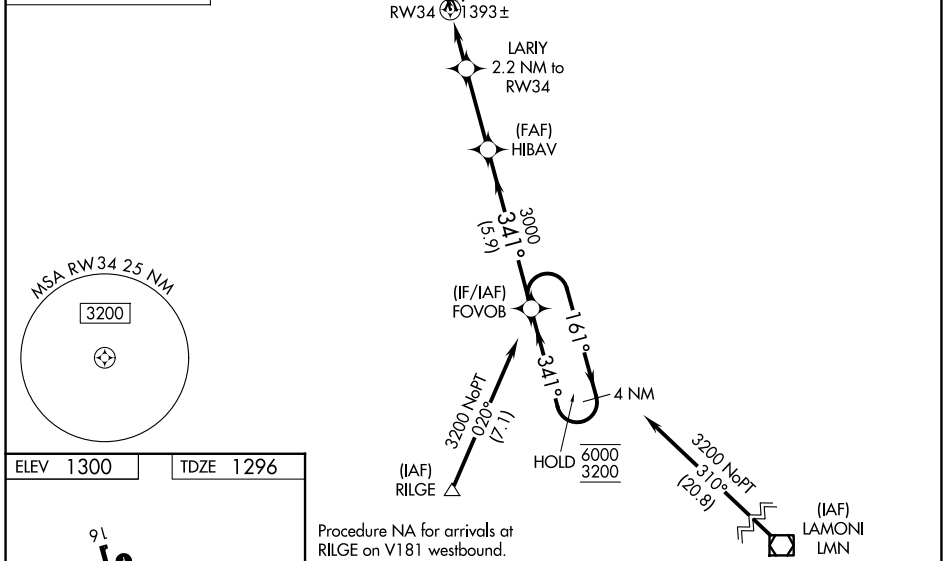
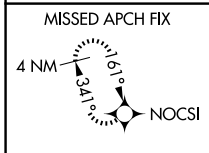
CRESTON MUNI (CSQ)

RNP APCH - GPS.

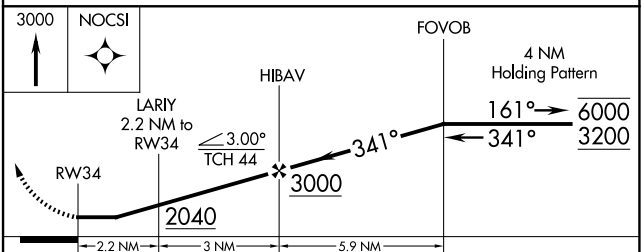
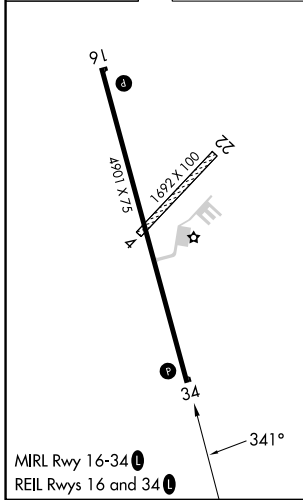
**⚠** Rwy 34 helicopter visibility reduction below 1 SM NA. Circling NA for Cats B and C west of Rwy 16-34. Circling NA to Rwy 4-22. When local altimeter setting not received, use DSM altimeter setting and increase all MDAs 160 feet and LNAV visibility Cat C 1/2 SM, and LP visibility Cat C 1/2 SM, and Circling visibility Cat C 1/2 SM.

MISSED APPROACH: Climb to 3000 direct NOCSI and hold.

AWOS-3 <b>124.75</b>	MINNEAPOLIS CENTER <b>125.65 306.95</b>	UNICOM <b>122.8 (CTAF) 0</b>
-------------------------	--	---------------------------------



ELEV 1300	TDZE 1296
-----------	-----------



CATEGORY	A	B	C	D
LP MDA		1660-1	364 (400-1)	NA
LNAV MDA		1660-1	364 (400-1)	NA
CIRCLING	1720-1 420 (500-1)	1820-1 520 (600-1)	1940-1¾ 640 (700-1¾)	NA

NC-3, 14 MAY 2026 to 11 JUN 2026

NC-3, 14 MAY 2026 to 11 JUN 2026