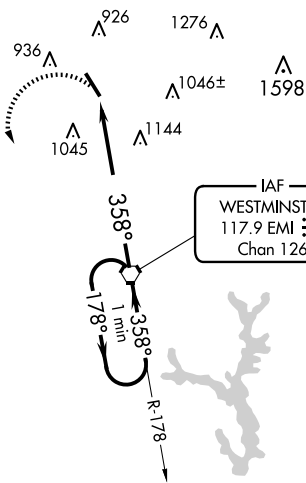
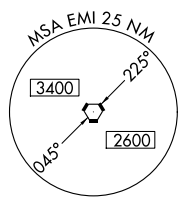


VORTAC EMI 117.9 Chan 126	APP CRS 358°	Rwy Idg TDZE Apt Elev	5100 788 789
---	------------------------	-----------------------------	---

VOR RWY 34

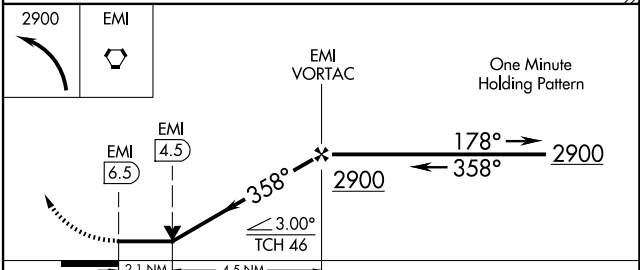
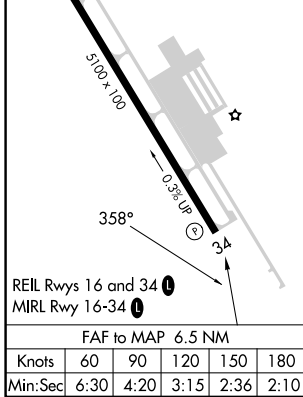
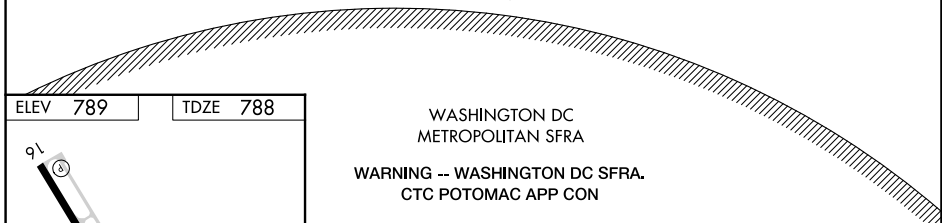
CARROLL COUNTY RGNL/JACK B POAGE FLD (DMW)

NA		MISSED APPROACH: Climbing left turn to 2900 direct EMI VORTAC and hold.	
AWOS-3 121.25	POTOMAC APP CON 125.525 291.625	GCO 121.725	UNICOM 122.7 (CTAF) 0



NE-3, 14 MAY 2026 to 11 JUN 2026

NE-3, 14 MAY 2026 to 11 JUN 2026



CATEGORY	A	B	C	D
S-34	1480-1	692 (700-1)	1480-2 692 (700-2)	NA
CIRCLING	1480-1	691 (700-1)	1500-2 711 (800-2)	NA

VOR RWY 34