

WAAS CH 97439 W27A	APP CRS 273°	Rwy Ldg TDZE 4649 879	Apt Elev 884
--	------------------------	---	------------------------

RNAV (GPS) RWY 27

LICKING COUNTY RGNL (VTA)

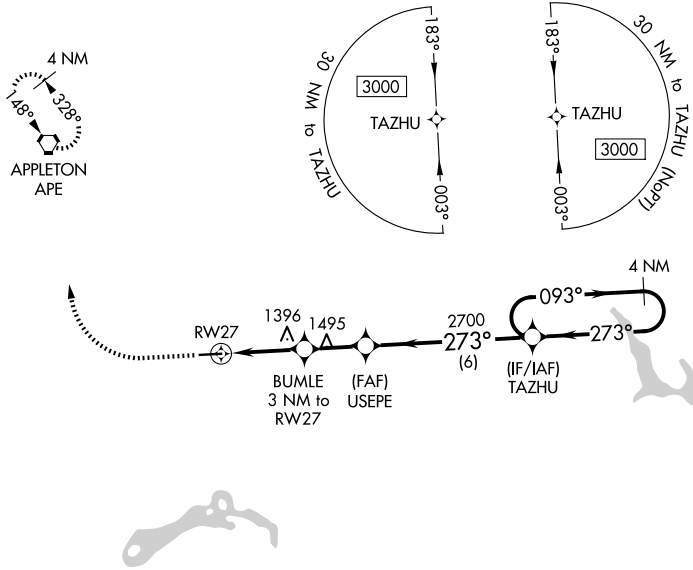
RNP APCH - GPS.



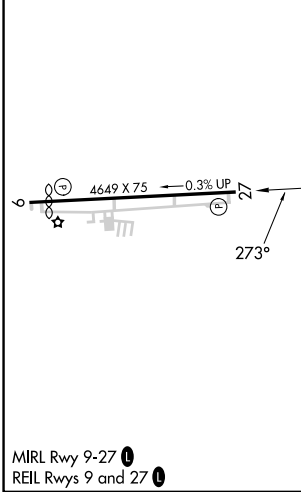
Circling Rwy 9 NA at night. Rwy 27 helicopter visibility reduction below 3/4 SM NA.

MISSED APPROACH: Climb to 2000 then climbing right turn to 3000 direct APE VORTAC and hold.

ASOS 121.125	COLUMBUS APP CON 125.95 317.775	CLNC DEL 125.175	UNICOM 122.7 (CTAF)	123.3
------------------------	---	----------------------------	-------------------------------	--------------



ELEV 884	TDZE 879
-----------------	-----------------



2000	3000	APE	4 NM Holding Pattern
BUMBLE 3 NM to RWY 27		USEPE	TAZHU
2.3 NM		0.7 NM	6 NM
CATEGORY	A	B	C
LP MDA	1680-1 801 (800-1)	1680-1¼ 801 (800-1¼)	1680-2½ 801 (800-2½)
LNAV MDA	1700-1 821 (900-1)	1700-1¼ 821 (900-1¼)	1700-2½ 821 (900-2½)
CIRCLING	1700-1¼	816 (900-1¼)	1760-2½ 876 (900-2½) 1760-2¾ 876 (900-2¾)

MIRL Rwy 9-27
REIL Rwy 9 and 27

EC-2, 14 MAY 2026 to 11 JUN 2026

EC-2, 14 MAY 2026 to 11 JUN 2026