

CRIED ONE DEPARTURE


AL-5537 (FAA)

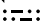
SUGAR LAND RGNL (SGR)


HOUSTON, TEXAS


ATIS
 118.125
 CLNC DEL
 121.4
 CLNC DEL
 119.25 (when twr closed)
 GND CON
 121.4
 SUGAR LAND TOWER*
 118.65 (CTAF)
 HOUSTON DEP CON
 123.8 257.7

**TOP ALTITUDE:
ASSIGNED BY ATC**

CEDAR CREEK
 114.8 CGY 
 Chan 95

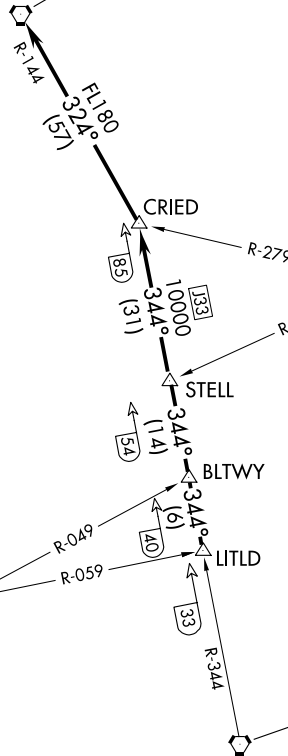
LUFKIN
 112.1 LFK 
 Chan 58

NAVASOTA
 115.9 TNV 
 Chan 106

HUMBLE
 116.6 IAH 
 Chan 113

TAKEOFF MINIMUMS
 Rwys 17, 35: Standard.

NOTE: RADAR required.



SC-5, 14 MAY 2026 to 11 JUN 2026

SC-5, 14 MAY 2026 to 11 JUN 2026

(CONTINUED ON FOLLOWING PAGE)

NOTE: Chart not to scale.

CRIED ONE DEPARTURE

HOUSTON, TEXAS

SUGAR LAND RGNL (SGR)

CRIED ONE DEPARTURE



DEPARTURE ROUTE DESCRIPTION

TAKEOFF RUNWAY 17: Climb on heading 170° to 1500 before turning. When entering controlled airspace, climb on assigned heading for RADAR vectors to LITLD INT. Maintain ATC assigned altitude. Expect filed altitude 10 minutes after departure, thence

TAKEOFF RUNWAY 35: Climb on heading 350° to 1100 before turning. When entering controlled airspace, climb on assigned heading for RADAR vectors to LITLD INT. Maintain ATC assigned altitude. Expect filed altitude 10 minutes after departure, thence

. . . . on IAH R-344 to STELL INT, then on IAH R-344 to CRIED INT, then left turn on CQY R-144 to CQY VORTAC.

SC-5, 14 MAY 2026 to 11 JUN 2026

SC-5, 14 MAY 2026 to 11 JUN 2026

CRIED ONE DEPARTURE