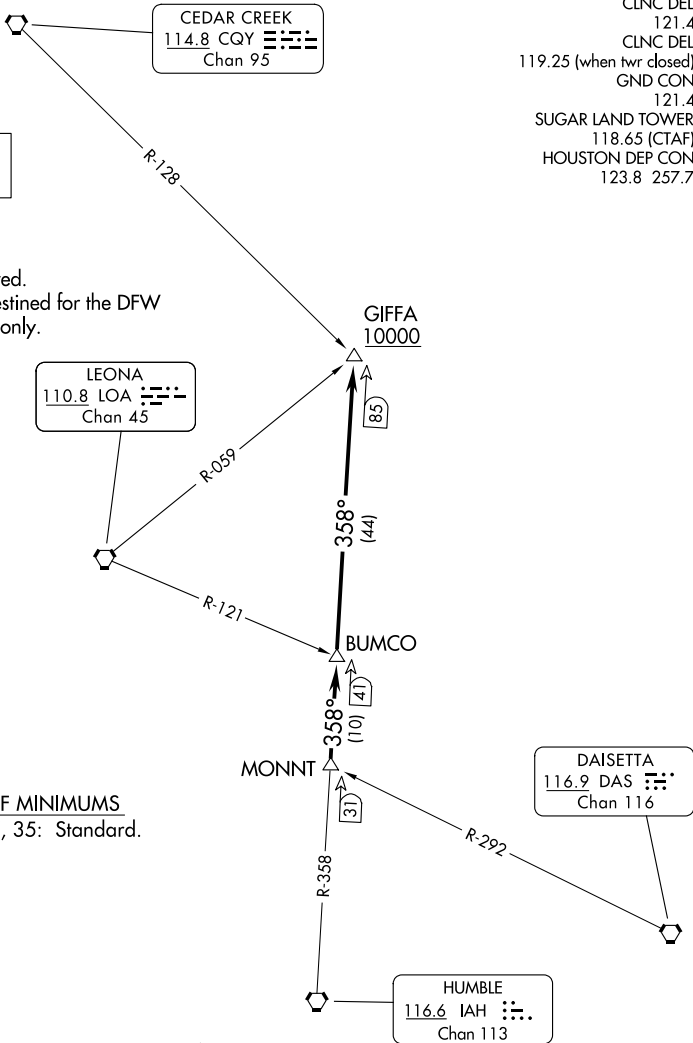


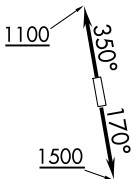
ATIS
 118.125
 CLNC DEL
 121.4
 CLNC DEL
 119.25 (when twr closed)
 GND CON
 121.4
 SUGAR LAND TOWER*
 118.65 (CTAF)
 HOUSTON DEP CON
 123.8 257.7

**TOP ALTITUDE:
ASSIGNED BY ATC**

NOTE: RADAR required.
 NOTE: For aircraft destined for the DFW
 terminal area only.



TAKEOFF MINIMUMS
 Rwys 17, 35: Standard.



(CONTINUED ON FOLLOWING PAGE)

NOTE: Chart not to scale.

SC-5, 14 MAY 2026 to 11 JUN 2026

SC-5, 14 MAY 2026 to 11 JUN 2026



DEPARTURE ROUTE DESCRIPTION

TAKEOFF RUNWAY 17: Climb on heading 170° to 1500 before turning. When entering controlled airspace, climb on assigned heading for RADAR vectors to MONNT INT. Maintain ATC assigned altitude. Expect filed altitude 10 minutes after departure, thence

TAKEOFF RUNWAY 35: Climb on heading 350° to 1100 before turning. When entering controlled airspace, climb on assigned heading for RADAR vectors to MONNT INT. Maintain ATC assigned altitude. Expect filed altitude 10 minutes after departure, thence

. . . . on IAH R-358 to cross GIFFA INT at or above 10000.

SC-5, 14 MAY 2026 to 11 JUN 2026

SC-5, 14 MAY 2026 to 11 JUN 2026