

HOODO SEVEN DEPARTURE (RNAV)

SC-5, 14 MAY 2026 to 11 JUN 2026

ATIS 118.125
 CLNC DEL 121.4
 CLNC DEL 121.4
 GND CON 121.4
 SUGARLAND TOWER* 118.65 (CTAF)
 HOUSTON DEP CON 123.8 257.7

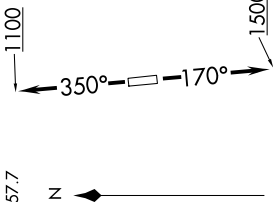
119.25 (when hwr closed)

SUGARLAND TOWER*

118.65 (CTAF)

HOUSTON DEP CON

123.8 257.7



NOTE: RNAV 1.

NOTE: RADAR required.

NOTE: ATC assigned only.

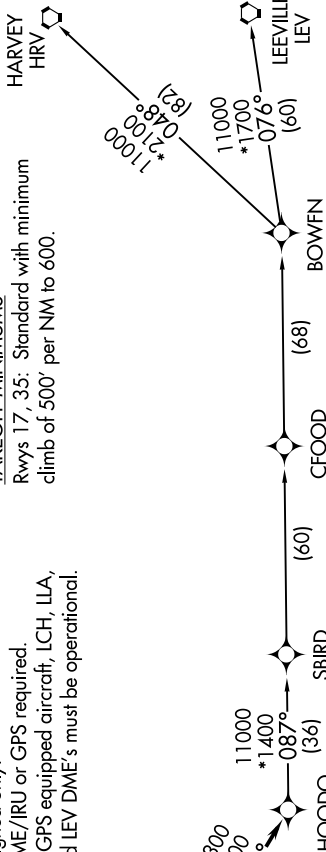
NOTE: DME/DME/IRU or GPS required.

NOTE: For non-GPS equipped aircraft, LCH, ILLA, TBD, and LEV DME's must be operational.

TAKEOFF MINIMUMS

Rwys 17, 35: Standard with minimum climb of 500' per NM to 600.

TOP ALTITUDE ASSIGNED BY ATC



NOTE: Chart not to scale.

DEPARTURE ROUTE DESCRIPTION

TAKEOFF RUNWAY 17: Climb on heading 170° to 1500, for RADAR vectors to VUH VOR/DME, thence

TAKEOFF RUNWAY 35: Climb on heading 350° to 1100, for RADAR vectors to VUH VOR/DME, thence

. . . . on track 118° to HOODO, then on (transition). Maintain ATC assigned altitude. Expect filed altitude 10 minutes after departure.

BOWFN TRANSITION (HOODO7.BOWFN)

CFOOD TRANSITION (HOODO7.CFOOD)

HARVEY TRANSITION (HOODO7.HRV)

LEEVILLE TRANSITION (HOODO7.LEV)

SBIRD TRANSITION (HOODO7.SBIRD)

SC-5, 14 MAY 2026 to 11 JUN 2026