

MMALT SEVEN DEPARTURE (RNAV)

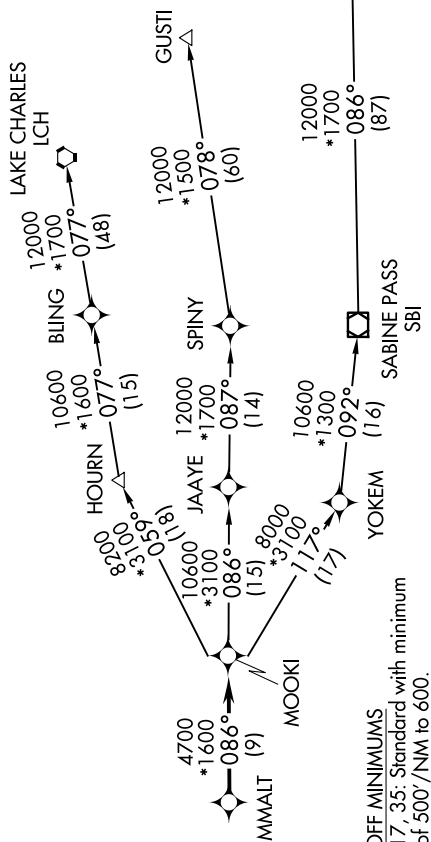
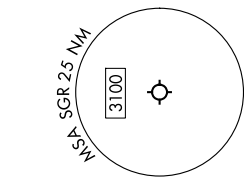
SC-5, 14 MAY 2026 to 11 JUN 2026

RNAV 1 - DME/DME/IRU or GPS.

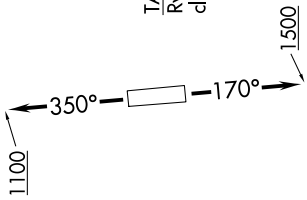
RADAR required.

HOUSTON DEP CON
123.8 257.7
ATIS
118.125
CLNC DEL
121.4
CLNC DEL (When twr closed)
119.25
GND CON
121.4
SUGARLAND TOWER *
118.65 (CTAF)

**TOP ALTITUDE:
ASSIGNED BY ATC**



TAKEOFF MINIMUMS
Rwys 17, 35: Standard with minimum
climb of 500'/NM to 600'.



NOTE: GUSTI and LCH Transitions ATC assigned only for aircraft departing AXH, EFD, GLS, HPY, IWS, LBX, LVJ, SGR, TME, T00, T41 and 54T.

DEPARTURE ROUTE DESCRIPTION

TAKEOFF RUNWAY 17: Climb on heading 170° to 1500, for RADAR vectors to MMALT, thence.
TAKEOFF RUNWAY 35: Climb on heading 350° to 1100, for RADAR vectors to MMALT, thence.

. . . . on track 086° to MOOKI, then on (transition). Maintain ATC assigned altitude.
 Expect filed altitude 10 minutes after departure.

GUSTI TRANSITION (MMALT7.GUSTI)
LAKE CHARLES TRANSITION (MMALT7.LCH)
WHITE LAKE TRANSITION (MMALT7.ILLA)

NOTE: Chart not to scale.

MMALT SEVEN DEPARTURE (RNAV)

SC-5, 14 MAY 2026 to 11 JUN 2026