

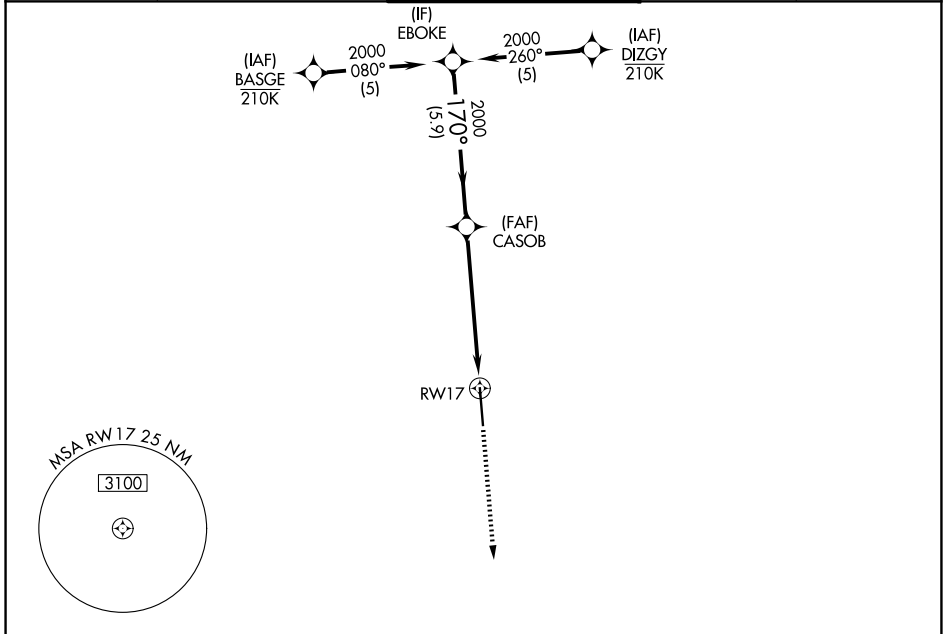
WAAS CH 82513 W17A	APP CRS 170°	Rwy Ldg TDZE Apt Elev	7620 81 81
----------------------------------------	------------------------	-----------------------------	---------------------------------------

RNAV (GPS) RWY 17

SUGAR LAND RGNL (SGR)

RNP APCH - GPS.	MISSED APPROACH: Climb to 2000 direct POPAM and hold.
<p>▼ For uncompensated Baro-VNAV systems, LNAV/VNAV NA below -4°C or above 54°C. Rwy 17 helicopter visibility reduction below ¼ SM NA.</p>	

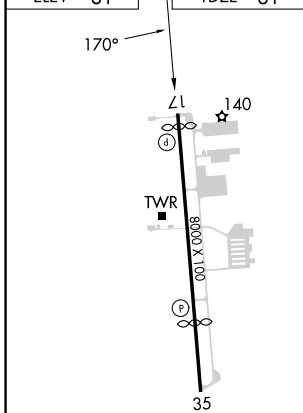
ATIS 118.125	HOUSTON APP CON 123.8 257.7	SUGAR LAND TOWER ★ 118.65 (CTAF) 0	GND CON 121.4	UNICOM 122.95
------------------------	---------------------------------------	----------------------------------------------	-------------------------	-------------------------



SC-5, 14 MAY 2026 to 11 JUN 2026

SC-5, 14 MAY 2026 to 11 JUN 2026

ELEV 81	TDZE 81
---------	---------



REIL Rwy 17 and 35 0
HIRL Rwy 17-35 0



VGSI and RNAV glidepath not coincident (VGSI Angle 3.50/TCH 52).				2000	POPAM
EBOKE	CASOB	RWY 17		2000 1.4 NM to RWY 17	
2000	2000	5.9 NM	4.5 NM		
GP 3.00° TCH 54					
CATEGORY	A	B	C	D	
LPV DA	398-1 317 (400-1)				
LNAV/VNAV DA	704-2 623 (700-2)				
LNAV MDA	640-1	559 (600-1)	640-1½	559 (600-1½)	
CIRCLING	720-1	639 (700-1)	720-1¾ 639 (700-1¾)	720-2 639 (700-2)	