

WAAS CH 56219 W35A	APP CRS 350°	Rwy Ldg 6016 TDZE 78 Apt Elev 82
--	------------------------	---

RNAV (GPS) RWY 35

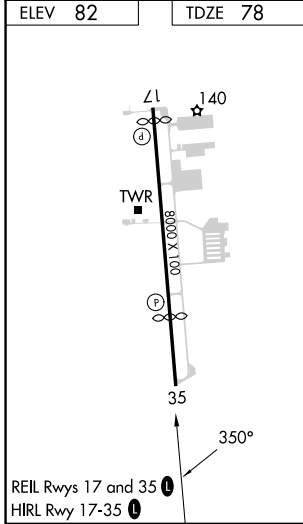
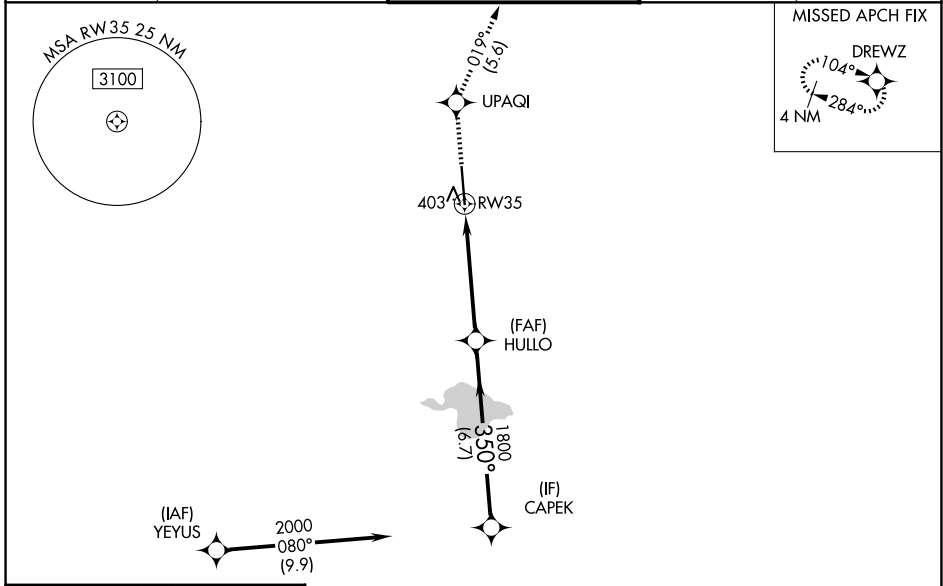
SUGAR LAND RGNL (SGR)

RNP APCH.

⚠ For uncompensated Baro-VNAV systems, LNAV/VNAV NA below -15°C (5°F) or above 43°C (109°F). Baro-VNAV and VDP NA when using William P Hobby altimeter setting. When local altimeter setting not received, use William P Hobby altimeter setting: increase all DA 51 feet; increase all MDA 60 feet and increase LNAV-VNAV all Cats visibility to 1¾, LNAV Cat C/D visibility to 1⅞, and Circling Cat C visibility to 2, Cat D to 2¼. When VGSI inop., Circling Rwy 17 NA at night.

MISSED APPROACH: Climb to 2000 direct UPAQI and on track 019° to DREWZ and hold.

ATIS 118.125	HOUSTON APP CON 123.8 257.7	SUGAR LAND TOWER ★ 118.65 (CTAF) 0	GND CON 121.4	UNICOM 122.95
------------------------	---------------------------------------	---	-------------------------	-------------------------



RADAR REQUIRED

ELEV 82	TDZE 78			
2000	UPAQI	tr 019°	DREWZ	
* LNAV only.				
RW35		HULLO 1800	CAPEK 2000	
* 1.7 NM to RW35		350°	1800	
1.7		3.5 NM	6.7 NM	
GP 3.00°	TCH 56			
CATEGORY	A	B	C	D
LPV DA	278-¾ 200 (200-¾)			
LNAV/VNAV DA	567-1⅝ 489 (500-1⅞)			
LNAV MDA	660-1	582 (600-1)	660-1¾	582 (600-1¾)
CIRCLING	720-1	638 (700-1)	720-1¾	720-2
			638 (700-1¾)	638 (700-2)

SC-5, 14 MAY 2026 to 11 JUN 2026

SC-5, 14 MAY 2026 to 11 JUN 2026