

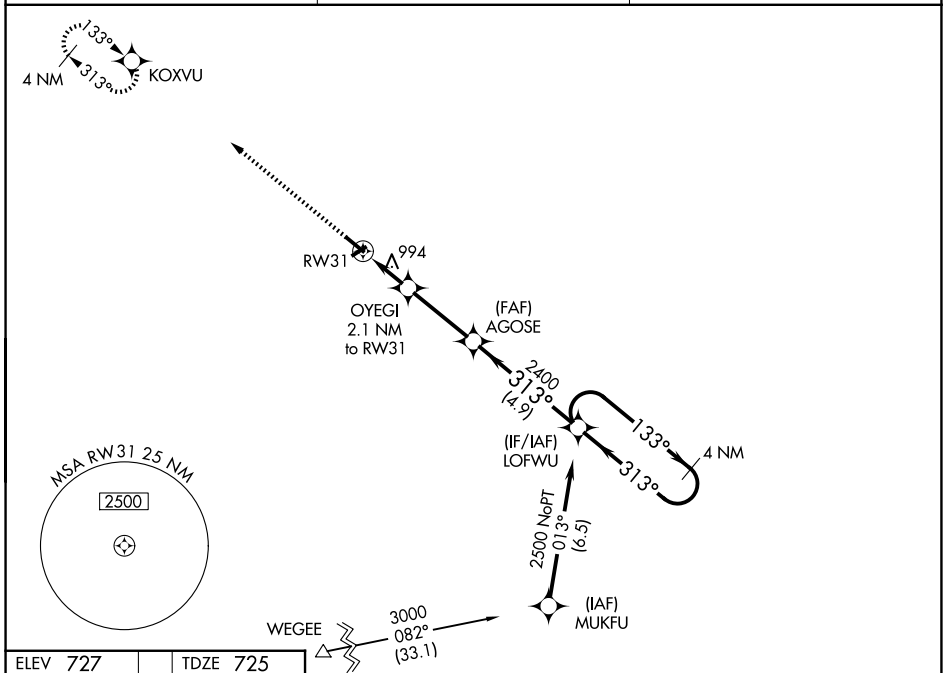
WAAS CH 97525 W31A	APP CRS 313°	Rwy Ldg TDZE 725 Apt Elev 727	4501
--	------------------------	---	-------------

RNAV (GPS) RWY 31

VIRGIL I GRISSOM MUNI (BFR)

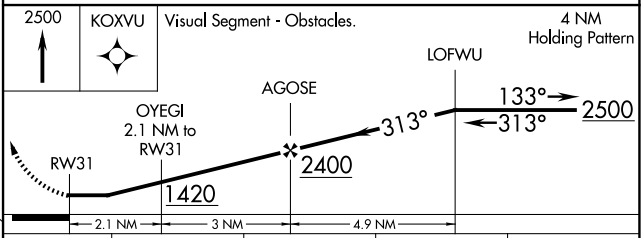
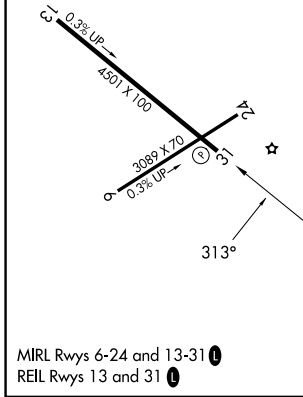
RNP APCH - GPS.	<p>▼ When local altimeter setting not received, use BMG altimeter setting and increase all MDAs 80 feet and LNAV visibility Cat C/D ¼ SM, and LP visibility Cat C/D ¼ SM, and Circling visibility Cat C/D ¼ SM. Procedure NA at night. Rwy 31 helicopter visibility reduction below 1 SM NA.</p>	<p>MISSED APPROACH: Climb to 2500 direct KOXVU and hold.</p>
-----------------	--	--

AWOS-3PT 119.125	LOUISVILLE APP CON 123.675 327.0	UNICOM 122.8 (CTAF) 0
----------------------------	--	---------------------------------



ELEV 727	TDZE 725
----------	----------

Procedure NA for arrivals at WE GEE on V305 southwest bound.



CATEGORY	A	B	C	D
LP MDA	1260-1	535 (600-1)	1260-1½	535 (600-1½)
LNAV MDA	1260-1	535 (600-1)	1260-1½	535 (600-1½)
CIRCLING	1300-1	573 (600-1)	1380-1¾ 653 (700-1¾)	1380-2 653 (700-2)

EC-2, 14 MAY 2026 to 11 JUN 2026

EC-2, 14 MAY 2026 to 11 JUN 2026