

ICONS SIX DEPARTURE (RNAV)

CHARLOTTE DEP CON
128.325 307.8
AWOS-3P
118.175
CLNC DEL
127.35

RNAV 1 - DME/DME/IRU or GPS.

RADAR required.

**TOP ALTITUDE:
3000**

TAKEOFF MINIMUMS

Rwy 2: Standard.

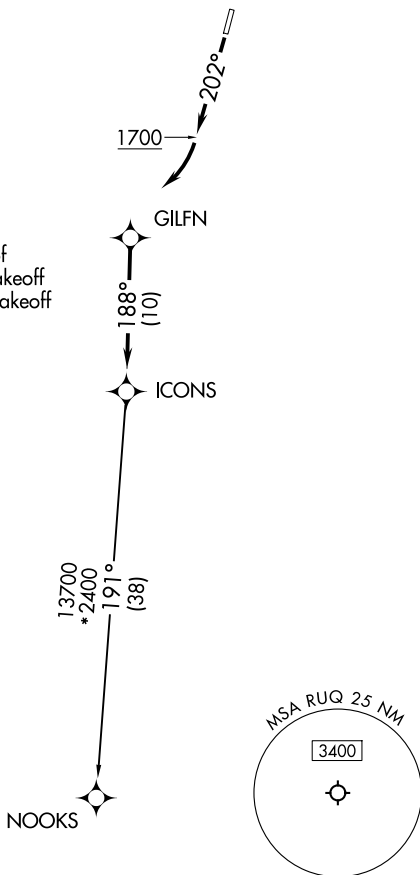
Rwy 20: 400-2¾ or standard with minimum climb of 205'/NM to 1300, or alternatively, with standard takeoff minimums and a normal 200'/NM climb gradient, takeoff must occur no later than 1200' prior to DER.

NOTE: Turbojet only.

NOTE: If unable to accept climb rates, advise ATC on initial contact.

NOTE: Transponder code will be issued via PDC or CLT CLNC DEL.

NOTE: Upon reaching 10000 MSL, accelerate to and maintain 280K, if unable advise ATC.



NOTE: Chart not to scale.



DEPARTURE ROUTE DESCRIPTION

TAKEOFF RUNWAY 2: Climb on heading assigned by ATC, thence. . .

TAKEOFF RUNWAY 20: Climb on heading 202° to 1700 before turning right, then on heading assigned by ATC, thence. . .

. . . for RADAR vectors to GILFN, then on track 188° to ICONS, then on NOOKS Transition. Maintain 3000, expect filed altitude 10 minutes after departure.

NOOKS TRANSITION (ICONS6.NOOKS)

SE-2, 14 MAY 2026 to 11 JUN 2026

SE-2, 14 MAY 2026 to 11 JUN 2026