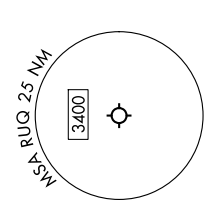
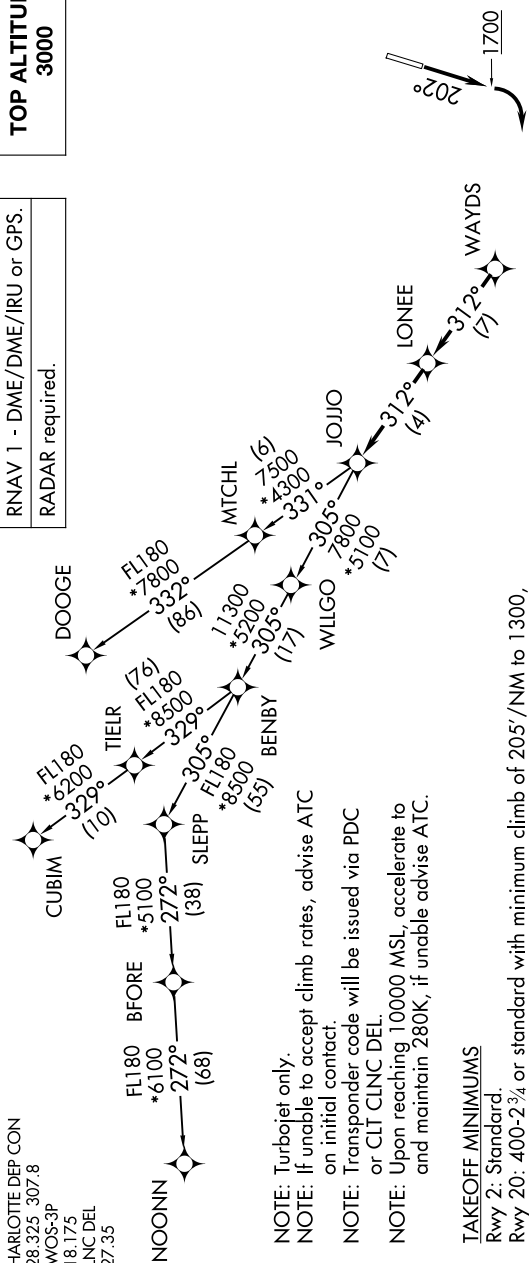


JOJJO SIX DEPARTURE (RNAV)

SE-2, 14 MAY 2026 to 11 JUN 2026

TOP ALTITUDE:
3000

RNAV 1 - DME/DME/IRU or GPS.
RADAR required.



- NOTE: Turbojet only.
- NOTE: If unable to accept climb rates, advise ATC on initial contact.
- NOTE: Transponder code will be issued via PDC or CLT CLNC DEL.
- NOTE: Upon reaching 10000 MSL, accelerate to and maintain 280K, if unable advise ATC.

TAKEOFF MINIMUMS

Rwy 2: Standard.
 Rwy 20: 400-2¾ or standard with minimum climb of 205'/NM to 1300, or alternatively, with standard takeoff minimums and a normal 200'/NM climb gradient, takeoff must occur no later than 1200' prior to DER.

DEPARTURE ROUTE DESCRIPTION

TAKEOFF RUNWAY 2: Climb on heading assigned by ATC, thence...
TAKEOFF RUNWAY 20: Climb on heading 20° to 1700 before turning right, then on heading assigned by ATC, thence...
 ...for RADAR vectors to WAYDS, then on depicted route to JOJJO. Then on assigned transition. Maintain 3000, expect filed altitude 10 minutes after departure.

- CUBIM TRANSITION (JOJJO6.CUBIM)
- DOOGE TRANSITION (JOJJO6.DOOGE)
- NOONN TRANSITION (JOJJO6.NOONN)

JOJJO SIX DEPARTURE (RNAV)

SE-2, 14 MAY 2026 to 11 JUN 2026

NOTE: Chart not to scale.