

KILNS SIX DEPARTURE (RNAV)

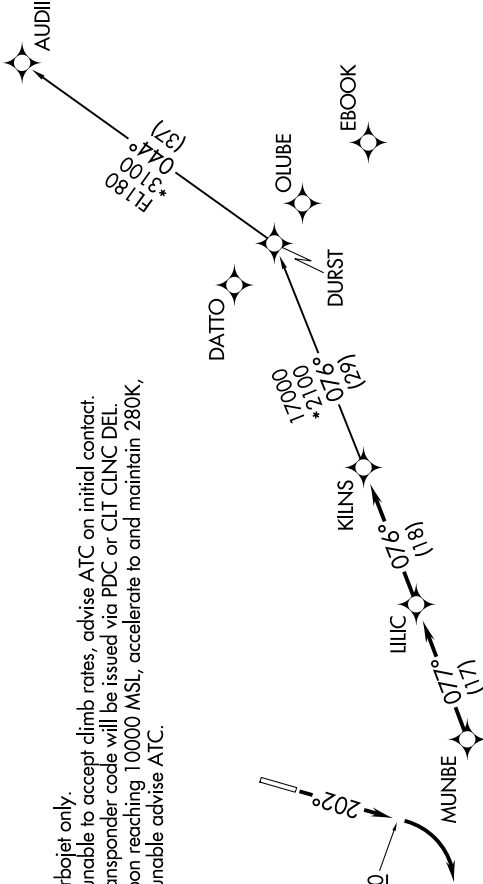
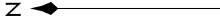
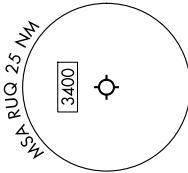
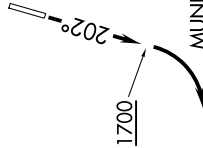
SE-2, 14 MAY 2026 to 11 JUN 2026

CHARLOTTE DEP CON
128.325 307.8
AWOS-3P
118.175
CLINC DEL
127.35

RNAV 1 - DME/DME/IRU or GPS.
RADAR required.

TOP ALTITUDE:
3000

- NOTE: Turbojet only.
- NOTE: If unable to accept climb rates, advise ATC on initial contact.
- NOTE: Transponder code will be issued via PDC or CLT CLINC DEL.
- NOTE: Upon reaching 10000 MSL, accelerate to and maintain 280K, if unable advise ATC.



TAKEOFF MINIMUMS

Rwy 2: Standard.
 Rwy 20: 400-2 $\frac{3}{4}$ or standard with minimum climb of 205'/NM to 1300, or alternatively, with standard takeoff minimums and a normal 200'/NM climb gradient, takeoff must occur no later than 1200' prior to DER.

DEPARTURE ROUTE DESCRIPTION

TAKEOFF RUNWAY 2: Climb on heading assigned by ATC, thence...
TAKEOFF RUNWAY 20: Climb on heading 202° to 1700 before turning right, then on heading assigned by ATC, thence...
 ... for RADAR vectors to MUNBE, then on depicted route to KILNS. Then on assigned transition. Maintain 3000, expect filed altitude 10 minutes after departure.

AUDIII TRANSITION (KILNS6.AUDIII)

NOTE: Chart not to scale.

KILNS SIX DEPARTURE (RNAV)

SE-2, 14 MAY 2026 to 11 JUN 2026