

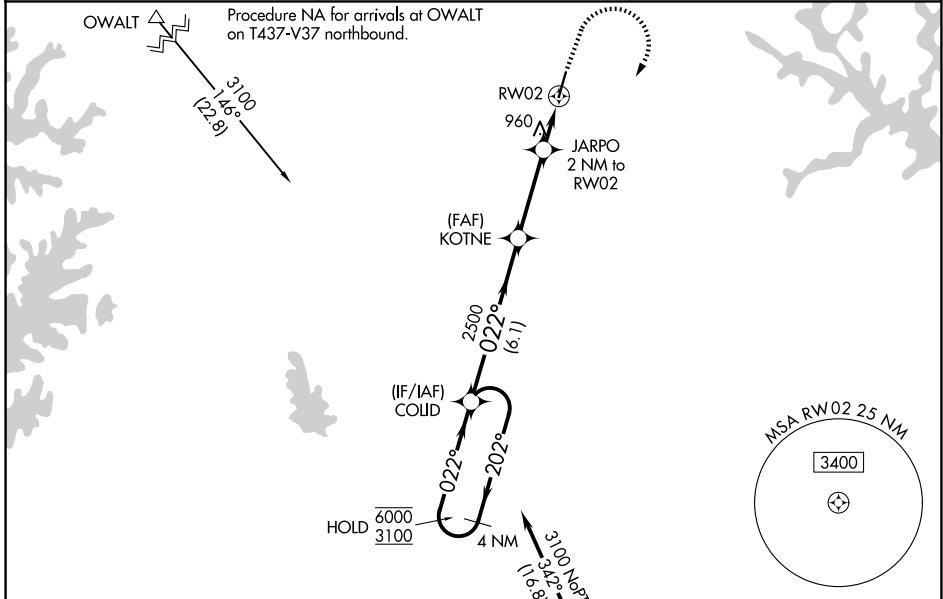
WAAS CH 40321 W02A	APP CRS 022°	Rwy Ldg TDZE Apt Elev	5375 772 772
--	------------------------	-----------------------------	---

RNAV (GPS) RWY 2

MID-CAROLINA RGNL (RUQ)

RNP APCH - GPS.	MISSED APPROACH: Climb to 1500 then climbing right turn to 3100 direct COLID and hold.
<p>Rwy 2 helicopter visibility reduction below 3/4 SM NA. For uncompensated Baro-VNAV systems, LNAV/VNAV NA below -16°C or above 54°C.</p>	

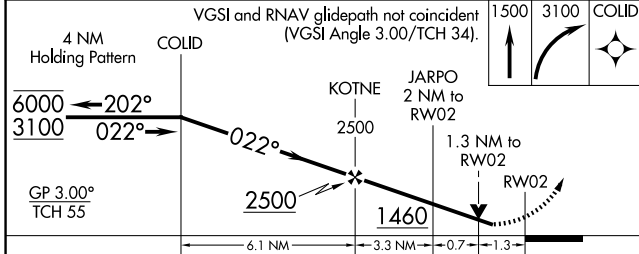
AWOS-3P 118.175	CHARLOTTE APP CON 128.325 307.8	UNICOM 122.725 (CTAF) 0
---------------------------	---	--



SE-2, 14 MAY 2026 to 11 JUN 2026

SE-2, 14 MAY 2026 to 11 JUN 2026

ELEV 772	TDZE 772
----------	----------



CATEGORY	A	B	C	D
LPV DA	1138-1 366 (400-1)			
LNAV/VNAV DA	1181-1½ 409 (500-1½)			
LNAV MDA	1220-1 448 (500-1)	1220-1¾ 448 (500-1¾)		
CIRCLING	1240-1 468 (500-1)	1260-1 488 (500-1)	1440-1¾ 668 (700-1¾)	1440-2 668 (700-2)

