

WAAS CH 82134 W26A	APP CRS 258°	Rwy Ldg TDZE Apt Elev	5000 209 239
--	------------------------	-----------------------------	---

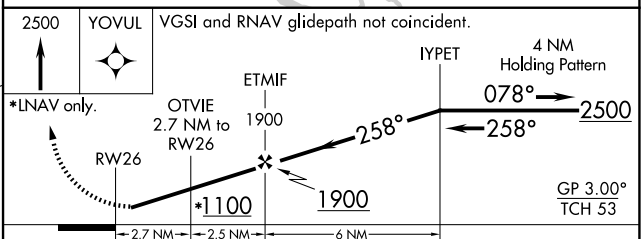
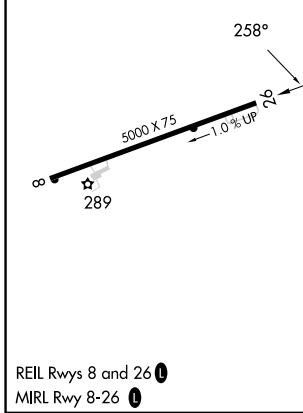
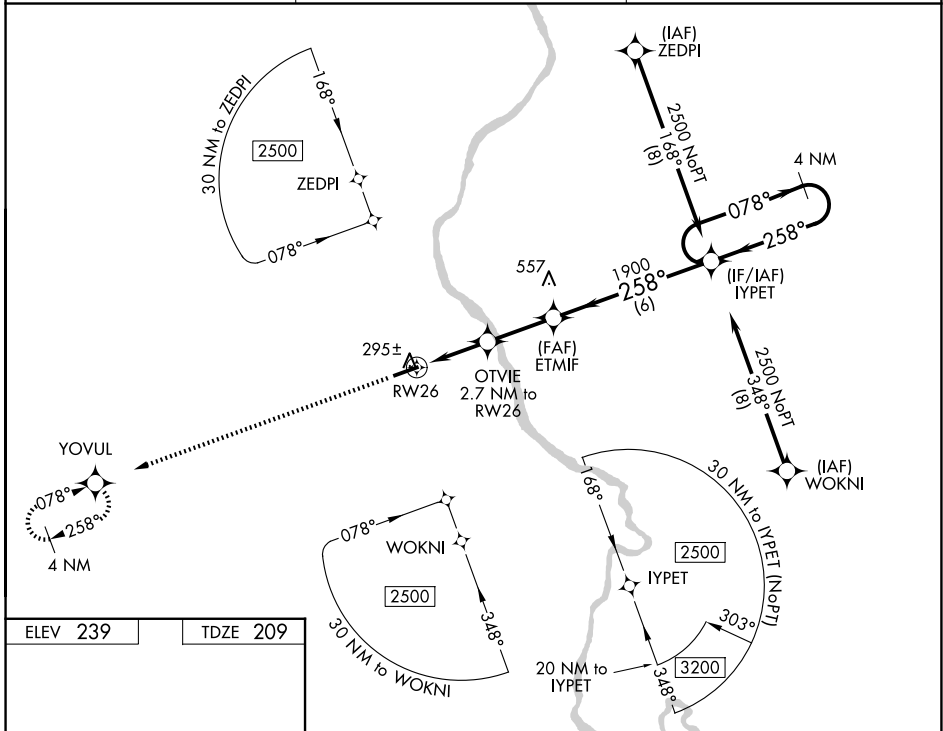
RNAV (GPS) RWY 26

CHERAW MUNI/LYNCH BELLINGER FLD (CQW)

▼ **▲** DME/DME RNP-0.3 NA. When local altimeter setting not received, use Darlington altimeter setting and increase all DA 44 feet, all MDA 60 feet, LNAV/VNAV all Cats visibility 1/8 mile, LNAV Cat C/D and Circling Cat C/D visibility 1/4 mile. Helicopter visibility reduction below 1 SM NA. For uncompensated Baro-VNAV systems, LNAV/VNAV NA below -15°C (5°F) or above 54°C (130°F). Procedure NA at night.

MISSED APPROACH: Climb to 2500 direct YOVL and hold.

AWOS-3 124.825	FLORENCE APP CON * 118.6 341.7	UNICOM 122.8 (CTAF) 0
--------------------------	--	---------------------------------



CATEGORY	A	B	C	D
LPV DA		459-1	250 (300-1)	
LNAV/VNAV DA		578-1 1/4	369 (400-1 1/4)	
LNAV MDA		560-1	351 (400-1)	
CIRCLING	700-1	461 (500-1)	1060-2 1/2 821 (900-2 1/2)	1060-2 3/4 821 (900-2 3/4)

SE-2, 14 MAY 2026 to 11 JUN 2026

SE-2, 14 MAY 2026 to 11 JUN 2026