

WAAS CH <b>42603</b> <b>W05A</b>	APP CRS <b>053°</b>	Rwy Ldg TDZE Apt Elev	<b>5001</b> <b>798</b> <b>802</b>
--	------------------------	-----------------------------	---

# RNAV (GPS) RWY 5

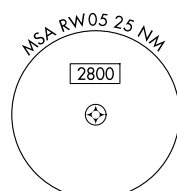
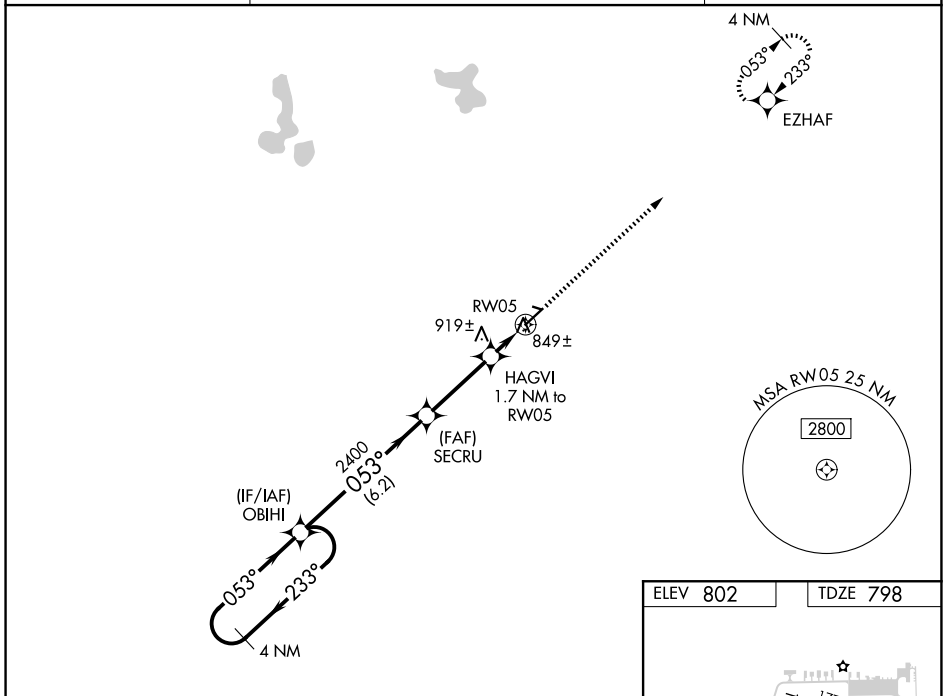
LENAWEE COUNTY (ADG)

RNP APCH - GPS.

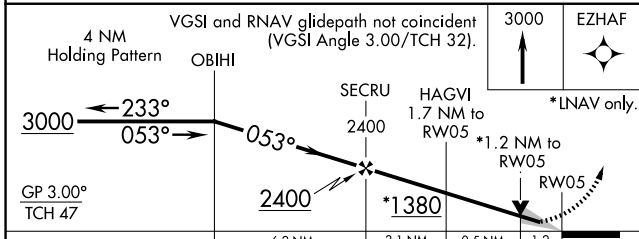
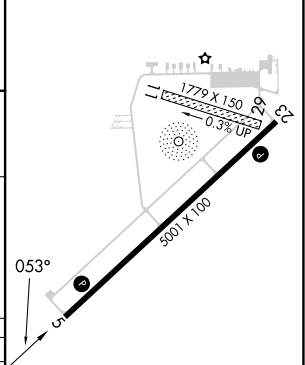
**⚠** For uncompensated Baro-VNAV systems, LNAV/VNAV NA below -16°C or above 54°C.  
**⚠** When local altimeter setting not received, use Ann Arbor Muni altimeter setting; increase LPV all Cats DA to 1114 feet and all visibilities 1/8 SM; increase LNAV/VNAV all Cats DA to 1185 feet; increase all MDA 80 feet and visibility LNAV Cats C/D 1/4 SM. Baro-VNAV and VDP NA when using Ann Arbor Muni altimeter setting.

MISSED APPROACH:  
Climb to 3000 direct EZHAF and hold.

ASOS <b>118.825</b>	TOLEDO APP CON <b>134.35 317.55</b>	UNICOM <b>122.8 (CTAF) 0</b>
------------------------	--	---------------------------------



ELEV 802	TDZE 798
----------	----------



CATEGORY	A	B	C	D
LPV DA	1048-3/4		250 (300-3/4)	
LNAV/VNAV DA	1119-1 1/4		321 (400-1 1/4)	
LNAV MDA	1200-1 402 (400-1)		1200-1 1/4 402 (400-1 1/4)	

HIRL Rwy 5-23 0  
REIL Rwy 5 0

EC-1, 14 MAY 2026 to 11 JUN 2026

EC-1, 14 MAY 2026 to 11 JUN 2026