

MILLERSBURG, OHIO

AL-5561 (FAA)

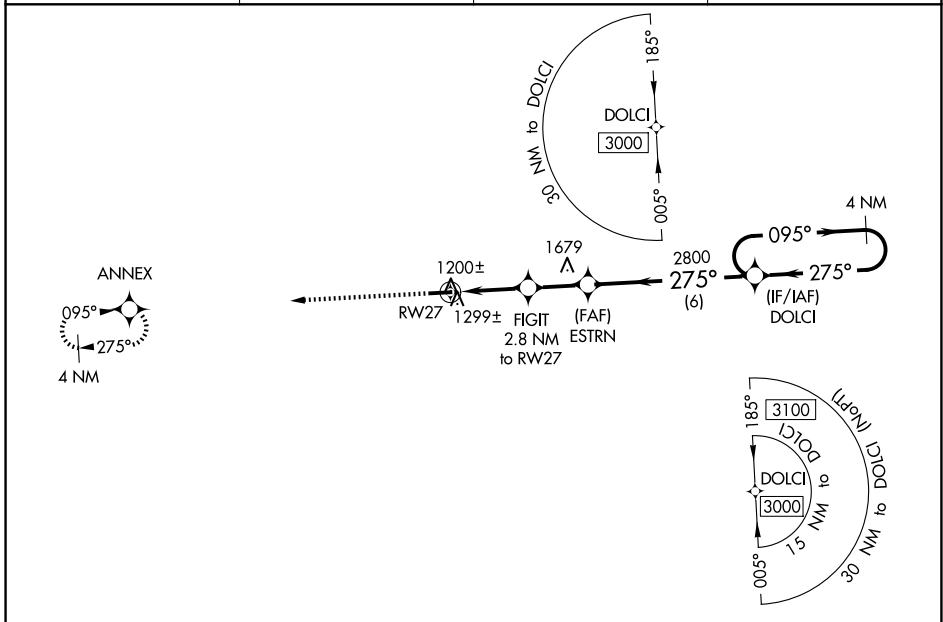
26078

WAAS CH 57937 W27A	APP CRS 275°	Rwy Ldg TDZE 1215 Apt Elev 1227
--	------------------------	---

RNAV (GPS) RWY 27

HOLMES COUNTY (10G)

RNP APCH - GPS.			MISSED APPROACH: Climb to 3000 direct ANNEX and hold.
AWOS-3 128.325	INDIANAPOLIS CENTER 124.45 323.275	UNICOM 123.0 (CTAF)	



ELEV 1227	TDZE 1215
-----------	-----------

	3000	ANNEX	VGSi and descent angles not coincident (VGSi Angle 3.00/TCH 25).		4 NM Holding Pattern	
			FIGIT 2.8 NM to RW27	ESTRN	DOLCI	
			0.9 NM to RW27	≤ 3.00° TCH 40'	2800	095° → 3000
			RW27	2100	275° ←	275° ← 3000
			0.9 1.9 NM -2.2 NM - 6 NM			
MIRL Rwy 9-27 1 REIL Rwy 9 and 27 1	CATEGORY	A	B	C	D	
	LP MDA	1480-1		265 (300-1)		
	LNAV MDA	1560-1		345 (400-1)		
	CIRCLING	1760-1	533 (600-1)	1840-1¾ 613 (700-1¾)	1860-2 633 (700-2)	

MILLERSBURG, OHIO
Orig-C 29DEC22

40°32'N-81°57'W

RNAV (GPS) RWY 27

EC-2, 14 MAY 2026 to 11 JUN 2026

EC-2, 14 MAY 2026 to 11 JUN 2026