

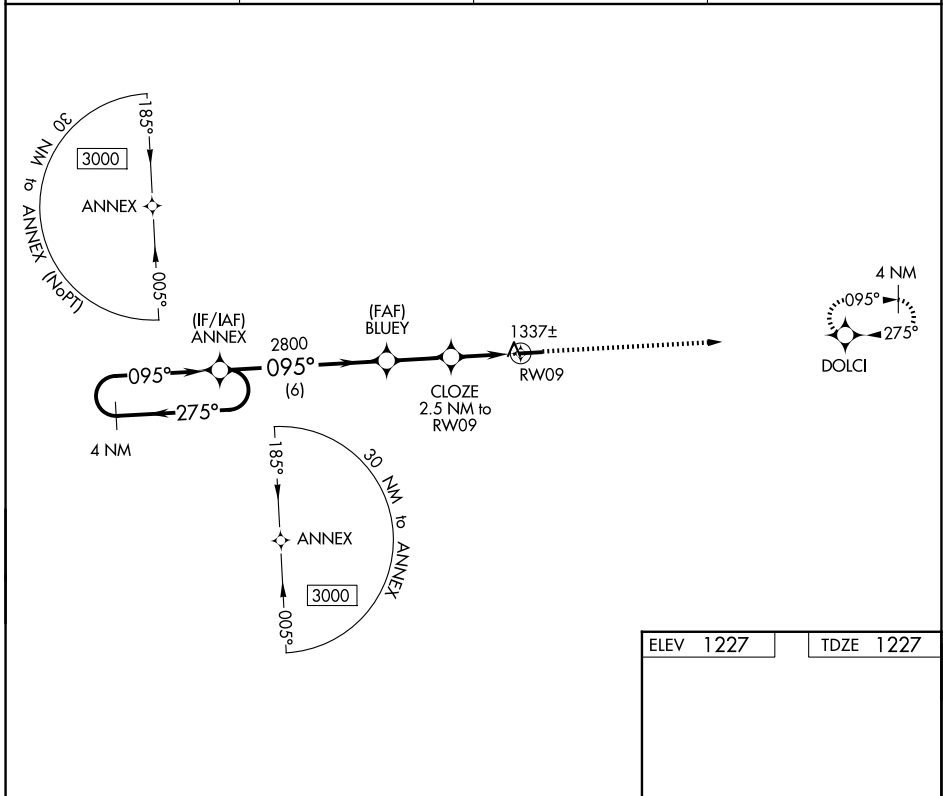
APP CRS	Rwy Ldg	<b>4400</b>
<b>095°</b>	TDZE	<b>1227</b>
	Apt Elev	<b>1227</b>

# RNAV (GPS) RWY 9

HOLMES COUNTY (10G)

RNP APCH - GPS.	MISSED APPROACH: Climb to 3000 direct DOLCI and hold.
<p><b>▼</b> Rwy 9 helicopter visibility reduction below <math>\frac{3}{4}</math> SM NA. When local altimeter setting not received, use Wayne County altimeter setting: increase all MDA 60 feet and visibility LNAV and Circling Cats C and D <math>\frac{1}{4}</math> SM.</p> <p><b>▲</b></p>	

AWOS-3 <b>128.325</b>	INDIANAPOLIS CENTER <b>124.45 323.275</b>	UNICOM <b>123.0</b> (CTAF)	<b>123.4</b> <b>0</b>
--------------------------	--	-------------------------------	-----------------------



EC-2, 14 MAY 2026 to 11 JUN 2026

EC-2, 14 MAY 2026 to 11 JUN 2026

4 NM Holding Pattern		Visual Segment - Obstacles.		3000	DOLCI
ANNEX		BLUEY	CLOZE	RWY09	
3000 ← 275°		2800	2060	4400 X 75	
→ 095°		→ 095°	2.5 NM to RWY09	1.0% UP	
6 NM		2.3 NM	2.5 NM	27	
CATEGORY	A	B	C	D	
LNAV MDA	1620-1	393 (400-1)	1620-1 $\frac{3}{8}$	393 (400-1 $\frac{1}{2}$ )	
CIRCLING	1760-1	533 (600-1)	1840-1 $\frac{3}{4}$ 613 (700-1 $\frac{3}{4}$ )	1860-2 633 (700-2)	
					MIRL Rwy 9-27 <b>0</b> REIL Rwy 9 and 27 <b>0</b>