

WAAS CH <b>87030</b> <b>W13A</b>	APP CRS <b>135°</b>	Rwy Ldg TDZE Apt Elev	<b>5000</b> <b>1203</b> <b>1204</b>
--	------------------------	-----------------------------	---

# RNAV (GPS) RWY 13

ARTHUR N NEU (CIN)

RNP APCH - GPS.

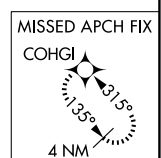
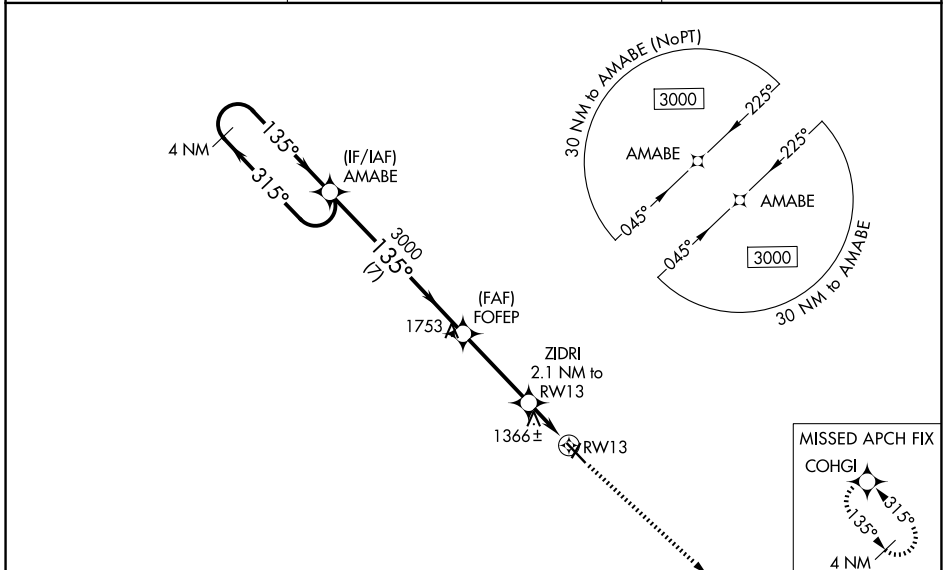
**⚠** For uncompensated Baro-VNAV systems, LNAV/VNAV NA below -17°C or above 54°C. Baro-VNAV and VDP NA when using Audubon altimeter setting. When local altimeter setting not received, use Audubon altimeter setting: increase LPV DA to 1515 feet; increase LNAV/VNAV DA to 1669 feet and all visibilities ¼ SM; increase all MDAs 80 feet and visibility Cat C ¼ SM.

MISSED APPROACH: Climb to 3000 direct COHGI and hold.

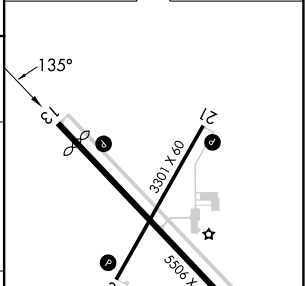
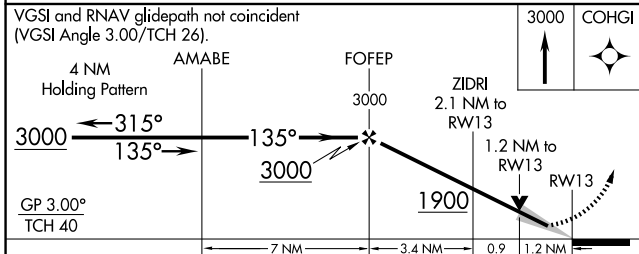
AWOS-3  
**118.025**

MINNEAPOLIS CENTER  
**134.0 288.3**

UNICOM  
**122.8 (CTAF) 0**



ELEV 1204 TDZE 1203



CATEGORY	A	B	C	D
LPV DA	1453-1	250 (300-1)		NA
LNAV/VNAV DA	1607-1⅓	404 (500-1⅓)		NA
LNAV MDA	1620-1	417 (500-1)	1620-1⅓ 417 (500-1⅓)	NA
CIRCLING	1740-1	536 (600-1)	1980-2¼ 776 (800-2¼)	NA

MIRL Rwy 13-31 and 3-21  
REIL Rwy 3, 13, 21 and 31

NC-3, 14 MAY 2026 to 11 JUN 2026

NC-3, 14 MAY 2026 to 11 JUN 2026