

WAAS CH <b>56336</b> <b>W12A</b>	APP CRS <b>126°</b>	Rwy Ldg TDZE <b>541</b> Apt Elev <b>547</b>
--	------------------------	---

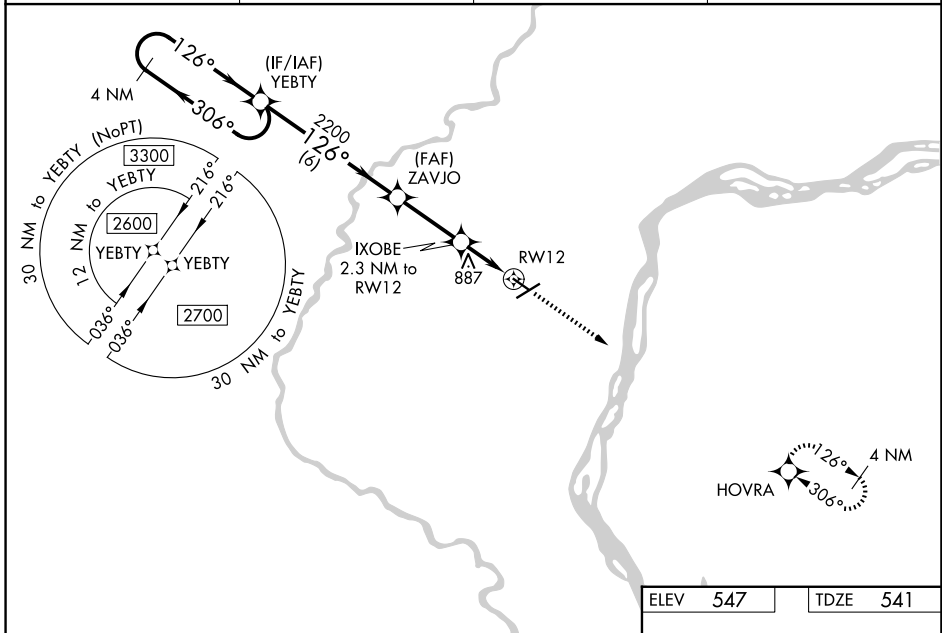
# RNAV (GPS) RWY 12

MUSCATINE MUNI (MUT)

**⚠** DME/DME RNP-0.3 NA. Helicopter visibility reduction below 1 SM NA. VDP and Baro-VNAV NA with Iowa City altimeter setting. When local altimeter setting not received, use Iowa City altimeter setting and increase all DA 76 feet and all MDA 80 feet, increase LPV, LNAV/VNAV all Cals visibility 1/2 mile. For uncompensated Baro-VNAV systems, LNAV/VNAV NA below -16°C (4°F) or above 54°C (130°F).

MISSED APPROACH: Climb to 2700 direct HOVRA and hold.

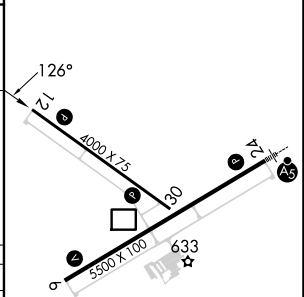
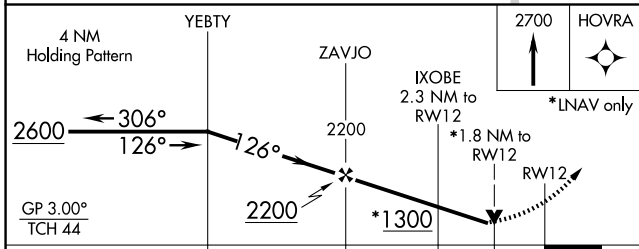
AWOS-3P <b>120.625</b>	QUAD CITY APP CON * <b>133.275 257.8</b>	CINC DEL <b>119.125</b>	UNICOM <b>122.7 (CTAF)</b>
---------------------------	---	----------------------------	-------------------------------



NC-3, 14 MAY 2026 to 11 JUN 2026

NC-3, 14 MAY 2026 to 11 JUN 2026

ELEV 547	TDZE 541
----------	----------



CATEGORY	A	B	C	D
LPV DA	1207-2½	666 (700-2½)		NA
LNAV/VNAV DA	1223-2½	682 (700-2½)		NA
LNAV MDA	1140-1	599 (600-1)		NA
CIRCLING	1140-1 593 (600-1)	1200-1 653 (700-1)		NA

REIL Rwy 6, 12, and 30  
MIRL Rwy 6-24 and 12-30