

WAAS CH <b>99701</b> <b>W24A</b>	APP CRS <b>240°</b>	Rwy Ldg TDZE Apt Elev	<b>5500</b> <b>545</b> <b>547</b>
--	------------------------	-----------------------------	---

# RNAV (GPS) RWY 24

MUSCATINE MUNI (MUT)

RNP APCH - GPS.

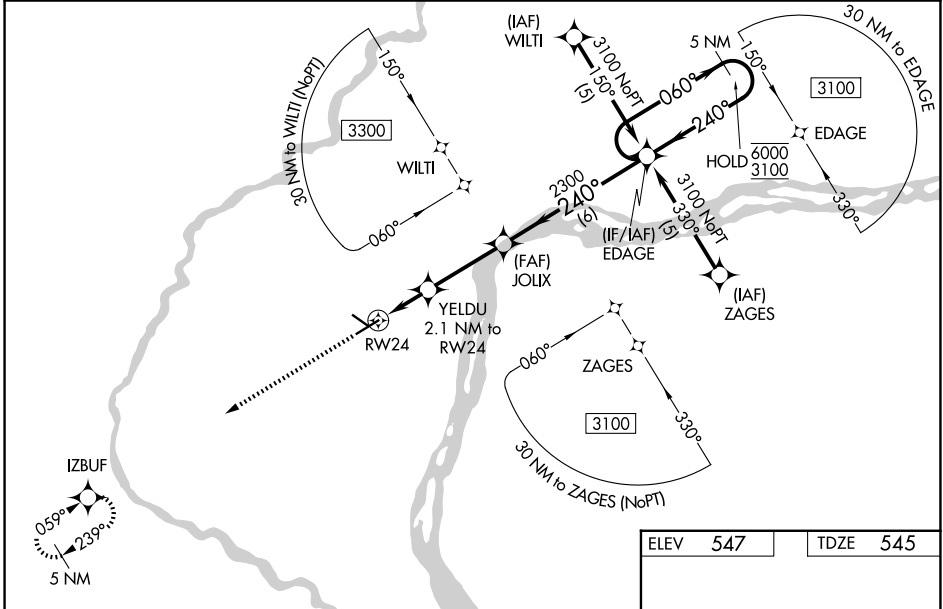
**⚠** For uncompensated Baro-VNAV systems, LNAV/VNAV NA below -16°C or above 54°C. For inop ALS, increase LPV all Cats visibility to 1 1/8 SM, LNAV/VNAV all Cats visibility to 1 1/8 SM, and LNAV Cats C/D visibility to 1 1/8 SM. When local altimeter setting not received, use IOW altimeter setting and increase LPV DA to 883 feet; increase LNAV/VNAV DA to 1024 feet and all visibilities 1/4 SM. Increase all MDAs 80 feet and LNAV visibility Cat C/D 1/4 SM, and Circling visibility Cat C 1/4 SM. Baro-VNAV and VDP NA when using IOW altimeter setting.

MALSR



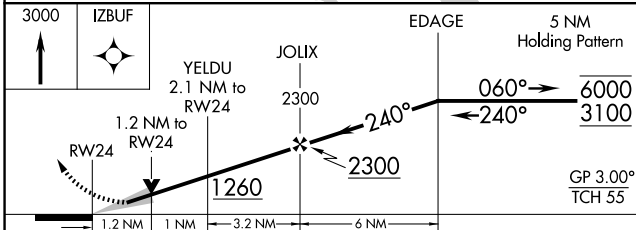
**MISSED APPROACH:**  
Climb to 3000 direct IZBUF and hold.

AWOS-3P <b>120.625</b>	QUAD CITY APP CON * <b>133.275 257.8</b>	CLNC DEL <b>119.125</b>	UNICOM <b>122.7 (CTAF)</b>
---------------------------	---	----------------------------	-------------------------------

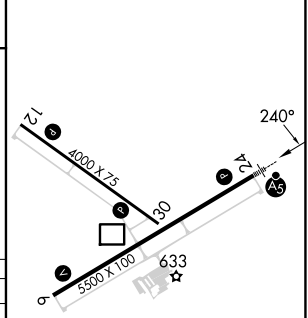


NC-3, 14 MAY 2026 to 11 JUN 2026

NC-3, 14 MAY 2026 to 11 JUN 2026



ELEV 547	TDZE 545
----------	----------



CATEGORY	A	B	C	D
LPV DA		812-1/2	267 (300-1/2)	
LNAV/VNAV DA		953-3/4	408 (500-3/4)	
LNAV MDA	960-1/2	415 (500-1/2)	960-3/4	415 (500-3/4)
CIRCLING	1080-1 533 (600-1)	1200-1 653 (700-1)	1200-1 3/4 653 (700-1 3/4)	1500-3 953 (1000-3)

REIL Rwy 6, 12, and 30  
MIRL Rwy 6-24 and 12-30