

WAAS CH <b>53701</b> <b>W06A</b>	APP CRS <b>059°</b>	Rwy Ldg TDZE Apt Elev	<b>5500</b> <b>547</b> <b>547</b>
--	------------------------	-----------------------------	---

# RNAV (GPS) RWY 6

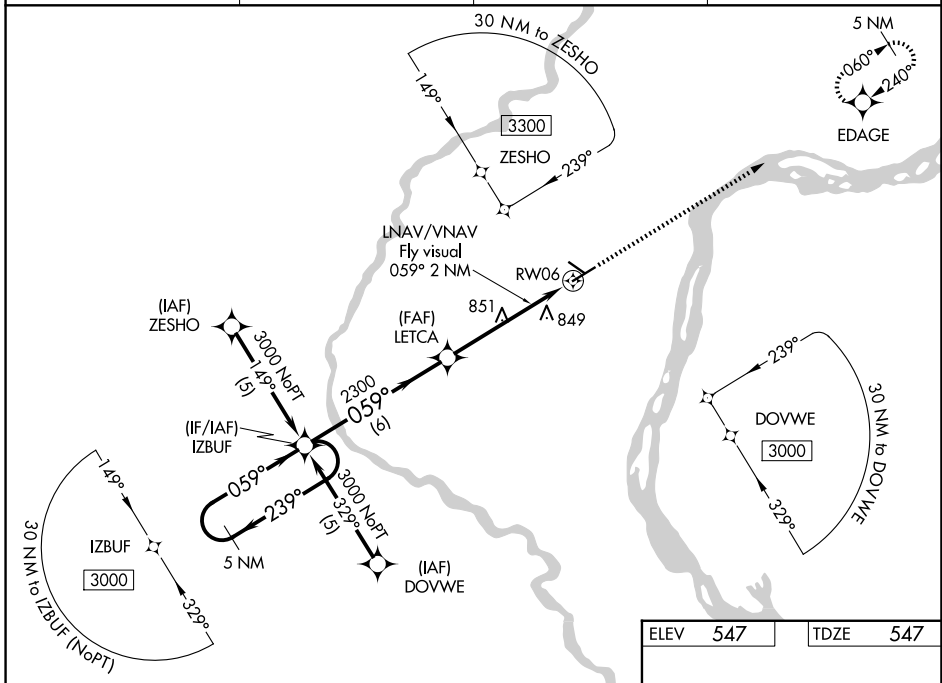
MUSCATINE MUNI (MUT)

RNP APCH - GPS.

**⚠** Rwy 6 helicopter visibility reduction below 3/4 SM NA. For uncompensated Baro-VNAV systems, LNAV/VNAV NA below -16°C or above 54°C. If local altimeter setting not received, use Iowa City Muni altimeter setting and increase all DAs/MDAs 80 feet. Baro-VNAV and VDP NA when using Iowa City Muni altimeter setting.

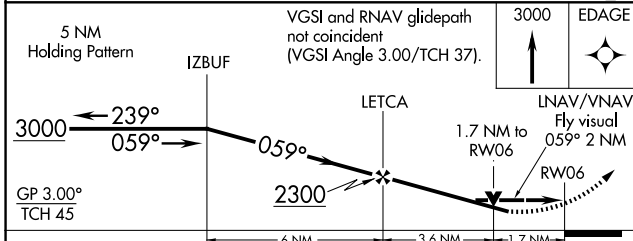
MISSED APPROACH: Climb to 3000 direct EDAGE and hold.

AWOS-3P <b>120.625</b>	QUAD CITY APP CON * <b>133.275 257.8</b>	CLNC DEL <b>119.125</b>	UNICOM <b>122.7 (CTAF) 0</b>
---------------------------	---	----------------------------	---------------------------------



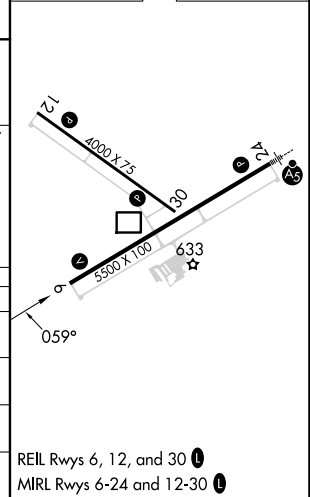
NC-3, 14 MAY 2026 to 11 JUN 2026

NC-3, 14 MAY 2026 to 11 JUN 2026



ELEV 547	TDZE 547
----------	----------

CATEGORY	A	B	C	D
LPV DA	1076-2 529 (600-2)			
LNAV/VNAV DA	1232-2	685 (700-2)	1232-2 1/4 685 (700-2 1/4)	
LNAV MDA	1120-1	573 (600-1)	1120-1 1/2 573 (600-1 1/2)	1120-1 3/4 573 (600-1 3/4)
CIRCLING	1120-2 1/2 573 (600-2 1/2)	1200-2 1/2 653 (700-2 1/2)	1500-3 953 (1000-3)	



REIL Rws 6, 12, and 30 0  
MIRL Rws 6-24 and 12-30 0