

WAAS CH <b>90208</b> <b>W18A</b>	APP CRS <b>181°</b>	Rwy Ldg <b>4997</b> TDZE <b>1191</b> Apt Elev <b>1191</b>
--	------------------------	---

# RNAV (GPS) RWY 18

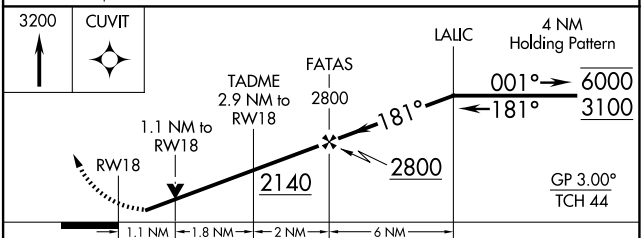
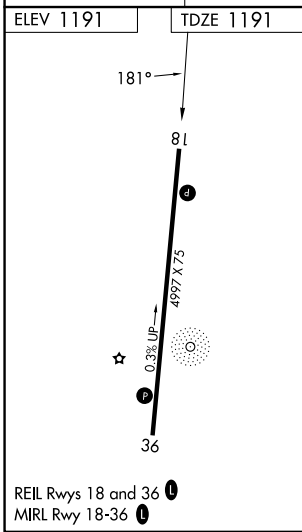
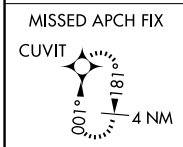
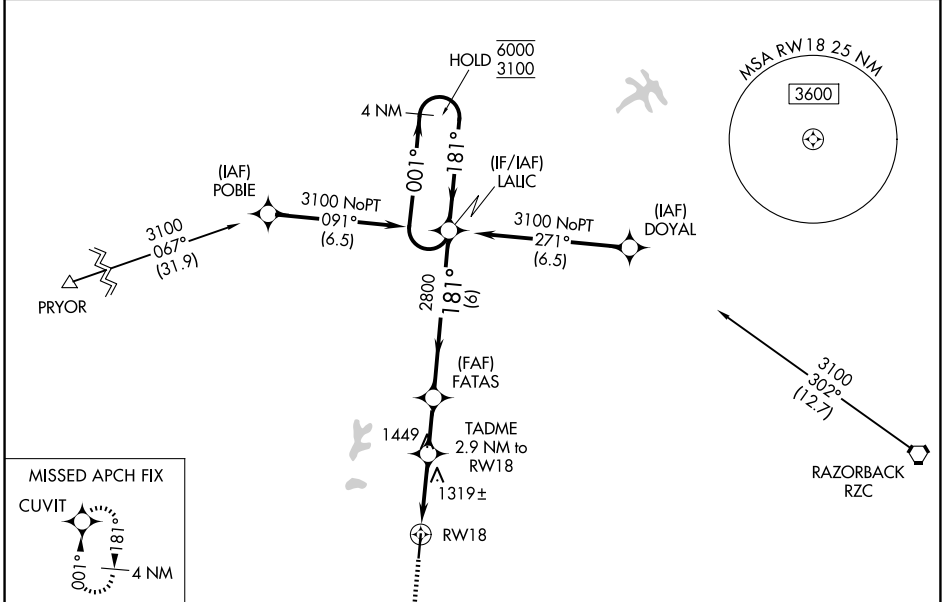
SMITH FLD (SLG)

RNP APCH-GPS.

**▽** Rwy 18 helicopter visibility reduction below 3/4 SM NA.  
**▲** For uncompensated Baro-VNAV systems, LNAV/VNAV NA below -17°C or above 54°C.

MISSED APPROACH:  
Climb to 3200 direct  
CUVIT and hold.

AWOS-3PT <b>118.375</b>	RAZORBACK APP CON ★ <b>121.0 244.575</b>	UNICOM <b>122.8 (CTAF) ①</b>
----------------------------	---	---------------------------------



CATEGORY	A	B	C	D
LPV DA		1513-1	322 (400-1)	
LNAV/VNAV DA		1598-1½	407 (500-1½)	
LNAV MDA	1580-1	389 (400-1)	1580-1½	389 (400-1½)
CIRCLING	1620-1 429 (500-1)	1720-1 529 (600-1)	1800-1¾ 609 (700-1¾)	1880-2¼ 689 (700-2¼)

SC-1, 14 MAY 2026 to 11 JUN 2026

SC-1, 14 MAY 2026 to 11 JUN 2026