

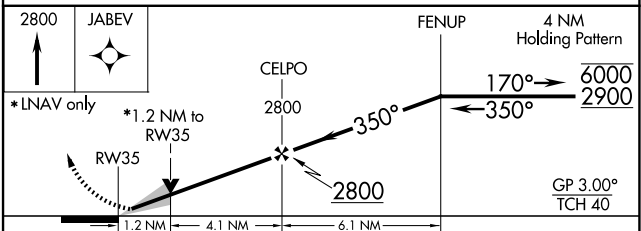
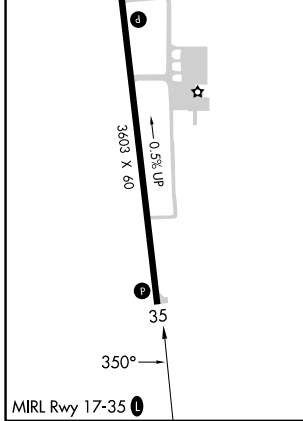
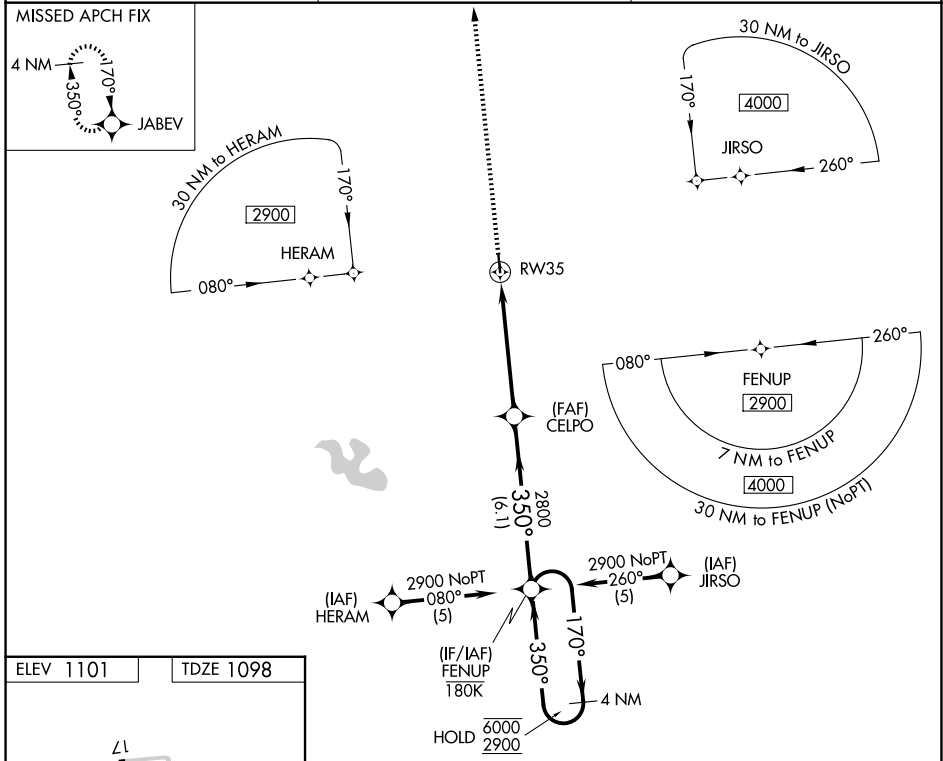
WAAS CH <b>58341</b> <b>W35A</b>	APP CRS <b>350°</b>	Rwy Ldg <b>3603</b> TDZE <b>1098</b> Apt Elev <b>1101</b>
--	------------------------	---

# RNAV (GPS) RWY 35

BOWIE MUNI (ØF2)

RNP APCH. ▼ For uncompensated Baro-VNAV systems, LNAV/VNAV NA below -17°C or above 54°C. ▲	MISSED APPROACH: Climb to 2800 direct JABEV and hold.
--	---

AWOS-3PT <b>118.75</b>	FORT WORTH CENTER <b>127.95 322.325</b>	UNICOM <b>122.8 (CTAF) Ø</b>
---------------------------	--	---------------------------------



CATEGORY	A	B	C	D
LPV DA	1348-1	250 (300-1)		NA
LNAV/VNAV DA	1394-1	296 (300-1)		NA
LNAV MDA	1520-1	422 (500-1)	1520-1¼ 422 (500-1¼)	NA
CIRCLING	1560-1 459 (500-1)	1680-1 579 (600-1)	1860-2¼ 759 (800-2¼)	NA

SC-2, 14 MAY 2026 to 11 JUN 2026

SC-2, 14 MAY 2026 to 11 JUN 2026