

WAAS CH 62946 W14A	APP CRS 134°	Rwy Ldg TDZE Apt Elev	3600 1446 1446
--	------------------------	-----------------------------	---

RNAV (GPS) RWY 14

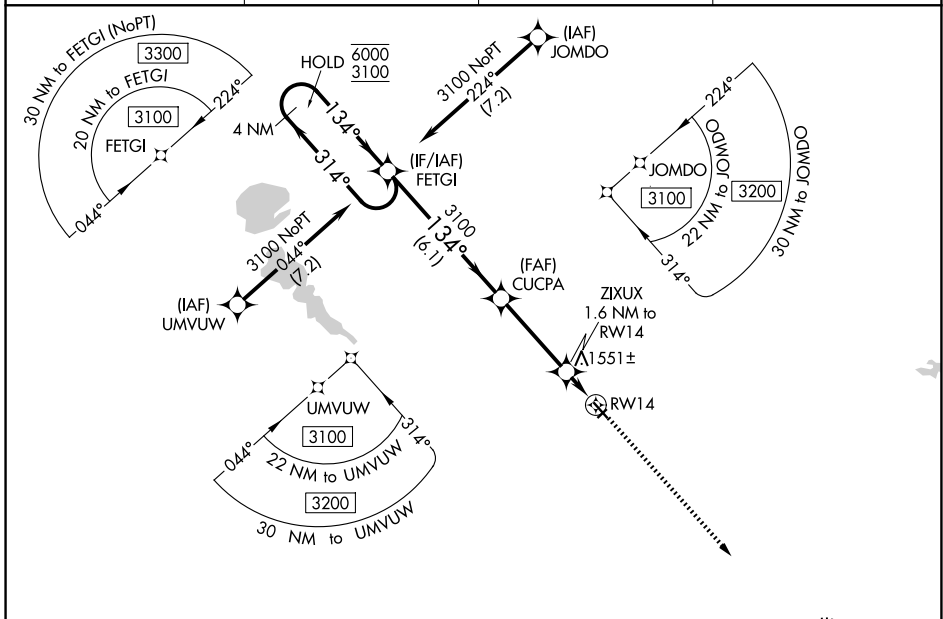
JACKSON MUNI (MJQ)

RNP APCH - GPS.

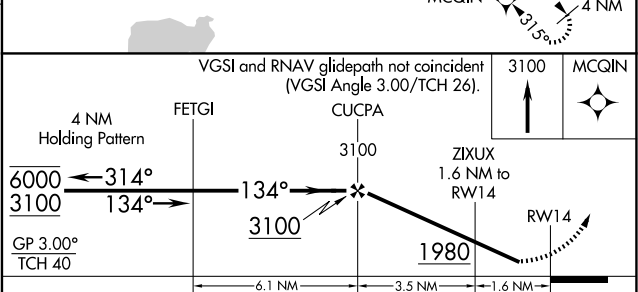
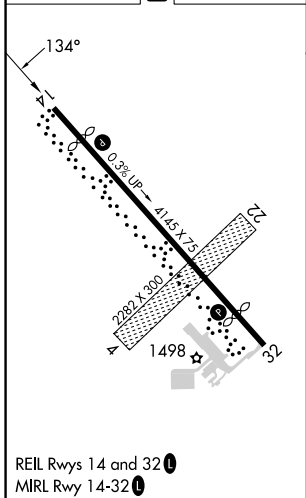
▽ For uncompensated Baro-VNAV systems, LNAV/VNAV NA below -17°C or above 54°C. Circling NA to Rwy 4 and 22. Rwy 14 helicopter visibility reduction below ¾ SM NA.

▲ MISSED APPROACH: Climb to 3100 direct MCQIN and hold.

AWOS-3 118.1	MINNEAPOLIS CENTER 127.75 257.7	GCO 121.725	UNICOM 122.8 (CTAF) 0
------------------------	---	-----------------------	---------------------------------



ELEV 1446	D	TDZE 1446
-----------	----------	-----------



CATEGORY	A	B	C	D
LPV DA	1696-1	250 (300-1)		NA
LNAV/VNAV DA	1838-1½	392 (400-1½)		NA
LNAV MDA	1820-1	374 (400-1)		NA
CIRCLING	2040-1	594 (600-1)		NA

NC-1, 14 MAY 2026 to 11 JUN 2026

NC-1, 14 MAY 2026 to 11 JUN 2026