

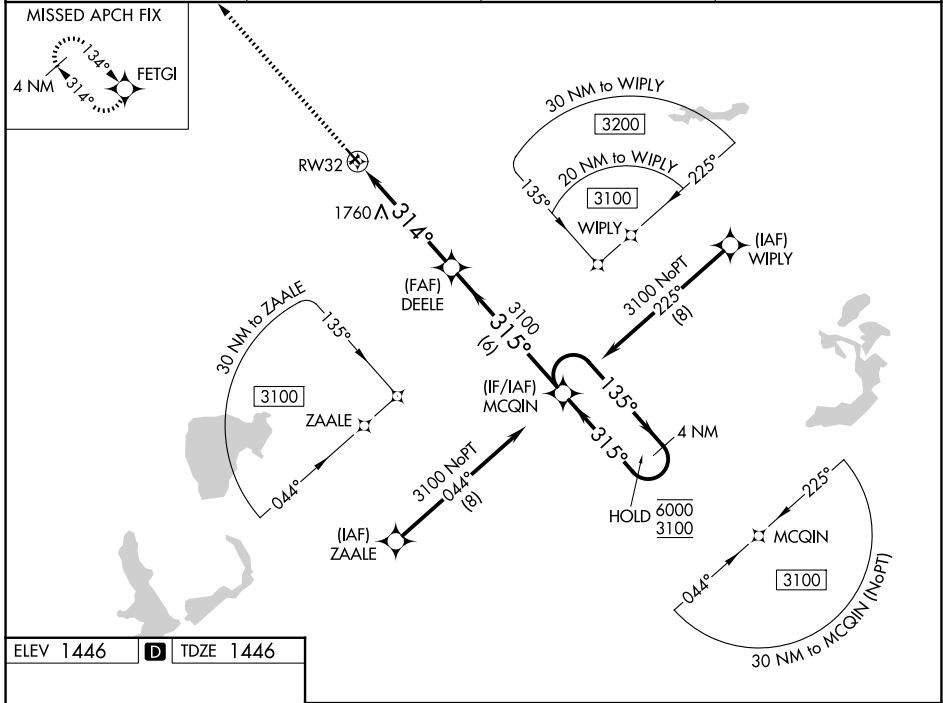
WAAS CH 69546 W32A	APP CRS 314°	Rwy Ldg TDZE 1446 Apt Elev 1446
--	------------------------	---

RNAV (GPS) RWY 32

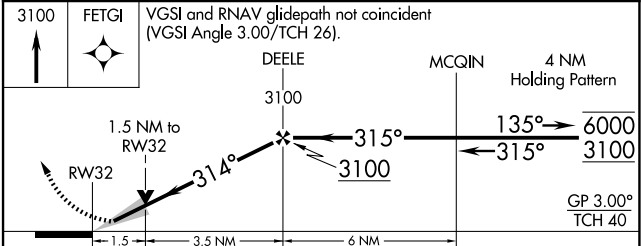
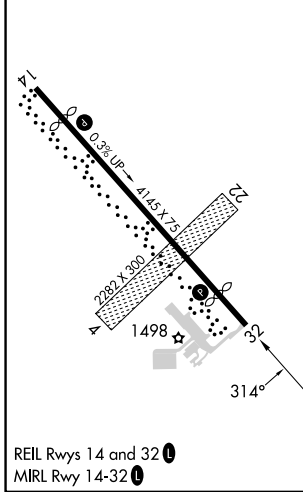
JACKSON MUNI (MJQ)

RNP APCH - GPS.	MISSED APPROACH: Climb to 3100 direct FETGI and hold.
<p>▼ For uncompensated Baro-VNAV systems, LNAV/VNAV NA below -17°C or above 54°C. Circling NA to Rwy's 4 and 22.</p>	

AWOS-3 118.1	MINNEAPOLIS CENTER 127.75 257.7	GCO 121.725	UNICOM 122.8 (CTAF) 0
------------------------	---	-----------------------	---------------------------------



ELEV 1446	D	TDZE 1446
-----------	----------	-----------



CATEGORY	A	B	C	D
LPV DA	1696-1	250 (300-1)		NA
LNAV/VNAV DA	1960-1 $\frac{3}{8}$	514 (600-1 $\frac{3}{8}$)		NA
LNAV MDA	1960-1	514 (600-1)		NA
CIRCLING	2040-1	594 (600-1)		NA

NC-1, 14 MAY 2026 to 11 JUN 2026

NC-1, 14 MAY 2026 to 11 JUN 2026