

# HI-ILS Z or LOC Z RWY 14

LOC/DME I-CZH <b>110.5</b> Chan <b>42</b>	APCH CRS <b>137°</b>	Rwy Idg TDZE Arpt Elev <b>7701</b> <b>27</b> <b>30</b>
---	-------------------------	---

[USAF]

JACKSONVILLE INTL (KJAX)

DME required. RADAR required for procedure entry.

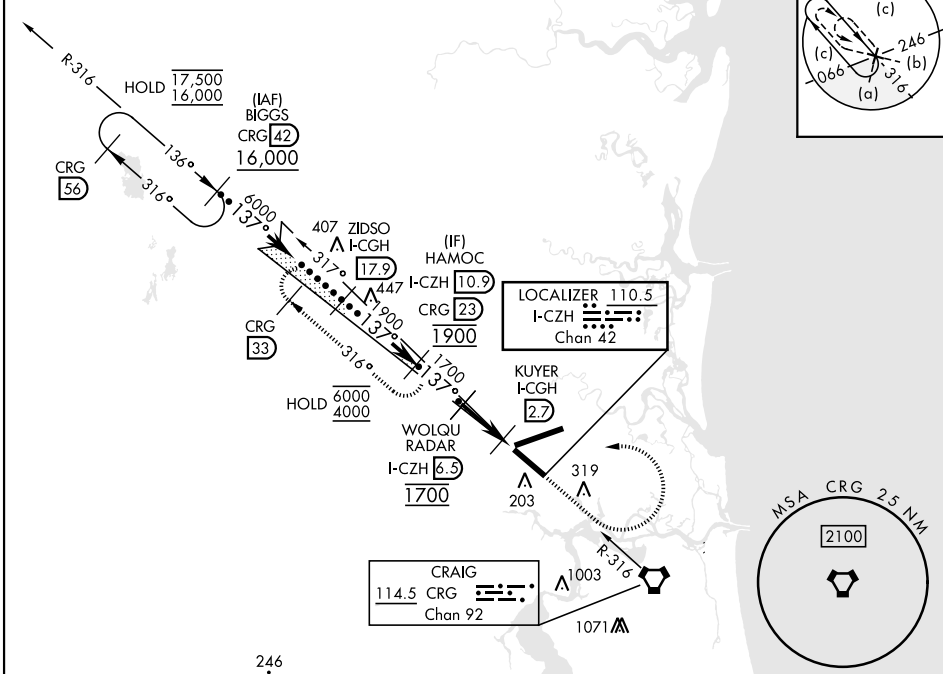
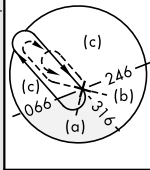
- \* When ALS inop, increase vis to ¾ mile.
- \*\* When ALS inop, increase vis to 1 mile.



MISSED APPROACH: Climb to 2000, then climbing left turn to 4000 on CRG VORTAC R-316 to HAMOC/CRG 23 DME and hold, continue climb-in-hold to 4000.

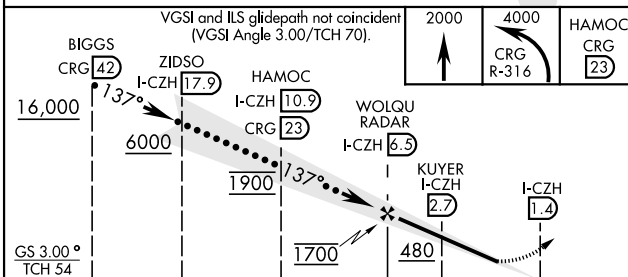
ATIS <b>125.85</b>	APP CON <b>119.0 269.9</b>	TOWER <b>118.3 317.7</b>	GND CON <b>121.9 348.6</b>	CLNC DEL <b>119.5 290.275</b>
-----------------------	-------------------------------	-----------------------------	-------------------------------	----------------------------------

Rwy 14 helicopter visibility reduction below ¾ mile NA. Autopilot coupled approach NA below 750.

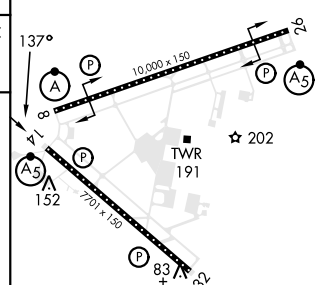


246

EMERG SAFE ALT 100 NM 2800 FROM CRG VORTAC



ELEV 30	TDZE 27
---------	---------



CATEGORY	C	D	E
S-ILS 14 *	306-¾	279 (300-¾)	
S-LOC 14 **	380-¾	353 (400-¾)	
CIRCLING	600-1½ 570 (600-1½)	600-2 570 (600-2)	760-2½ 730 (800-2½)

HIRL Rwy 8-26, 14-32 REIL Rwy 32 TDZL/RCLS Rwy 8, 14, 26
FAF to MAP 5.1 NM
Knots: 120, 140, 160, 180, 200
Min:Sec: 2:33, 2:11, 1:55, 1:42, 1:32

# HI-ILS Z or LOC Z RWY 14

SE-3, 14 MAY 2026 to 11 JUN 2026

SE-3, 14 MAY 2026 to 11 JUN 2026