

# HI-TACAN RWY 14

VORTAC CRG <b>114.5</b> Chan <b>92</b>	APCH CRS <b>136°</b>	Rwy ldg <b>7701</b> TDZE <b>27</b> Arpt Elev <b>30</b>
--	-------------------------	--

[USAF]

JACKSONVILLE INTL (KJAX)

DME required. RADAR required for procedure entry.

MALSR

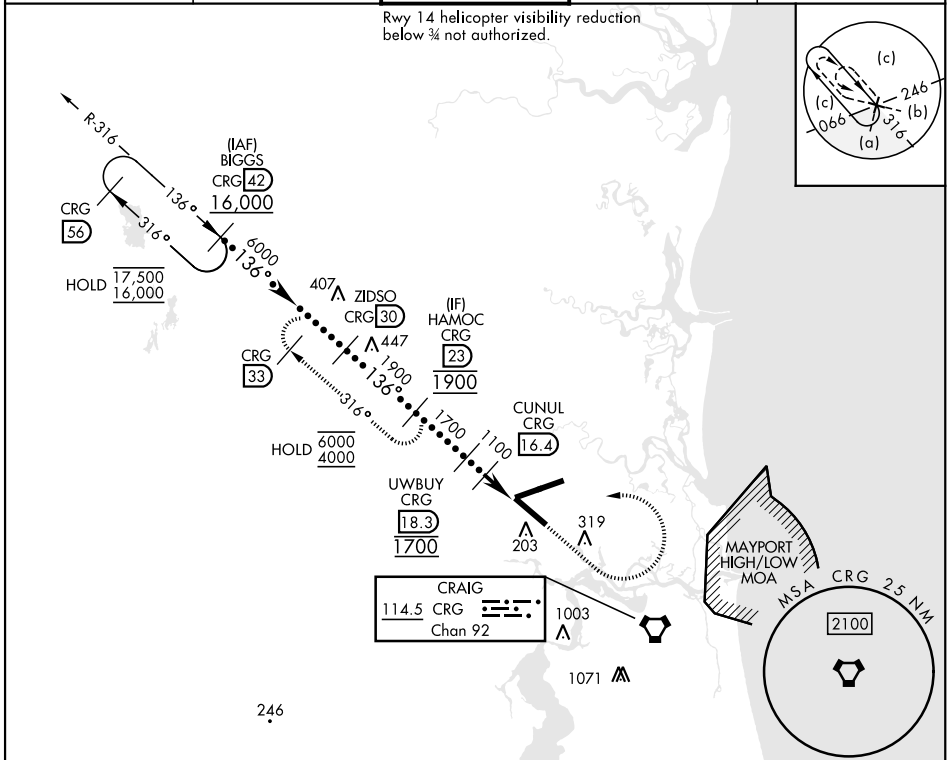
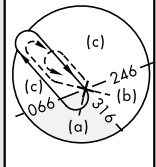


MISSED APPROACH: Climb to 2000 then climbing left turn to 4000 on CRG VORTAC R-316 to HAMOC 23 DME and hold.

\* When ALS inop, increase vis to 1 mile.

ATIS <b>125.85</b>	APP CON <b>119.0 269.9</b>	TOWER <b>118.3 317.7</b>	GND CON <b>121.9 348.6</b>	CLNC DEL <b>119.5 290.275</b>
-----------------------	-------------------------------	-----------------------------	-------------------------------	----------------------------------

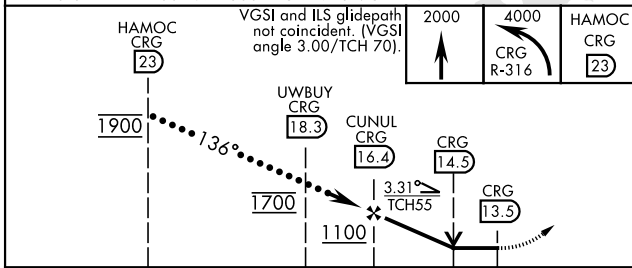
Rwy 14 helicopter visibility reduction below 3/4 not authorized.



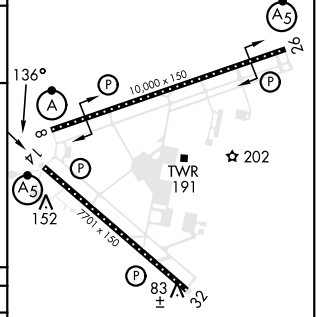
SE-3, 14 MAY 2026 to 11 JUN 2026

SE-3, 14 MAY 2026 to 11 JUN 2026

EMERG SAFE ALT 100 NM 2800 FROM CRG VORTAC



ELEV 30	TDZE 27
---------	---------



CATEGORY	C	D	E
S-14*	400-3/4	373 (400-3/4)	
CIRCLING	580-1 1/2 550 (600-1 1/2)	580-2 550 (600-2)	760-2 1/2 730 (800-2 1/2)

HIRL Rwy 8-26, 14-32  
REIL Rwy 32  
TDZL/CL Rwy 8, 14, 26

# HI-TACAN RWY 14